

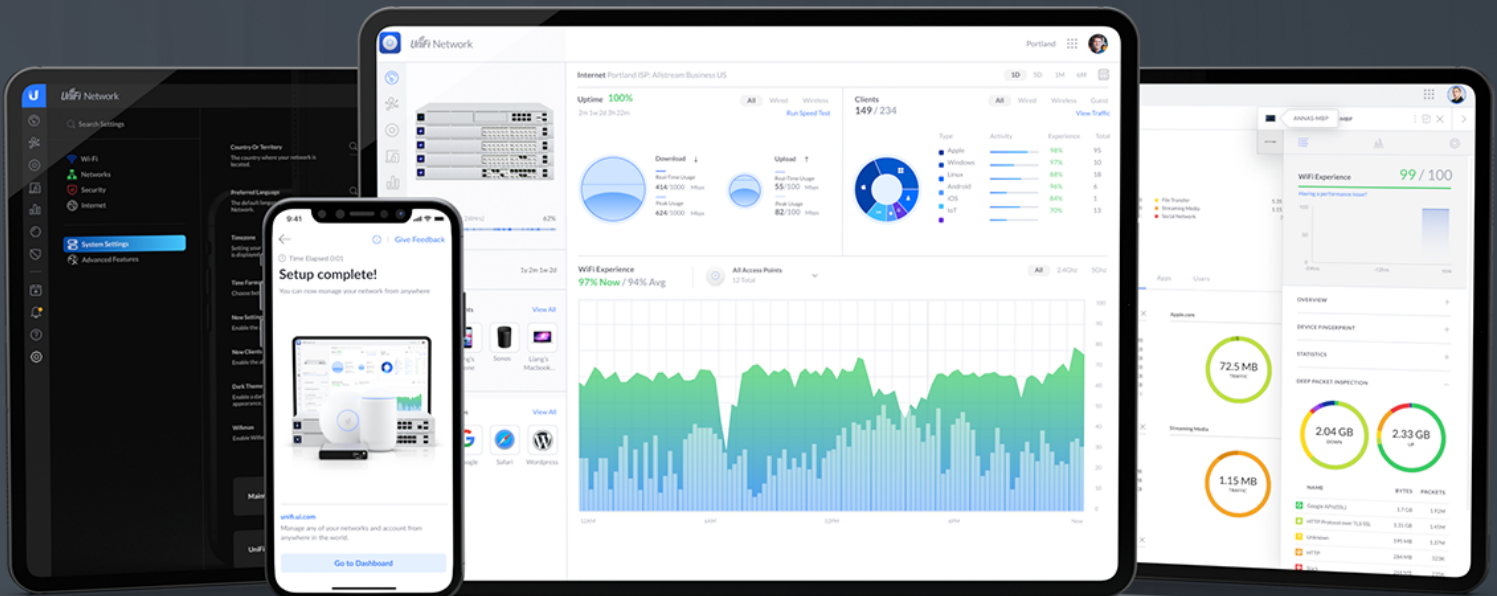
Twoja Infrastruktura IT

netf.pl

NETF, specjalizujemy się w sprzedaży zaawansowanej infrastruktury IT. Znajdą tu Państwo szeroki asortyment produktów od czołowych światowych producentów sprzętu i oprogramowania IT, w tym H3C, Huawei, Cisco, Juniper, Fortinet, a także Dell, IBM, CommVault i ESET. Dzięki współpracy z tymi renomowanymi partnerami, NETF zapewnia swoim klientom dostęp do najnowocześniejszych rozwiązań technologicznych.

**Bezpieczeństwo,
Efektywność,
Optymalizacja**





UniFi Pro Aggregation Switch

Build and expand your network with the UniFi® Switch, part of the Ubiquiti Networks® UniFi Enterprise System. The UniFi Switch, model USW-Aggregation-Pro, is a configurable 10G fiber Layer-3 switch. It offers 28 10G SFP+ fiber links to your devices and 4 25G SFP28 fiber uplink options to your enterprise network.

The USW-Aggregation-Pro features a 1.3" touch LCM. The LCM provides current switch states and the necessary information you need for quick diagnosis.

Managed and configured by the UniFi Controller with UniFi Mobile app support, the UniFi Switch offers an extensive suite of advanced Layer-3 switching protocols and features, including operation mode (switching, mirroring, or aggregate) per port, Inter-VLAN routing, static routing, and DHCP server. The UniFi Controller and mobile app allow admins to configure and monitor virtually all of the switch features in a graphical user interface from anywhere.

RPS DC input is a new feature on USW-Aggregation-Pro, this DC input provides redundant power when the switch is connected to USP-RPS (UniFi Smart Power RPS) via RPS DC input. When the switch's internal PSU is off, the Switch function can keep working by backup power from the USP-RPS input port.



Mechanical

Dimensions	442 x 325 x 44 mm (17.4 x 12.8 x 1.7")
Weight	Without Mount: 4.6 kg (10.14 lb) With Mount: 4.7 kg (10.36 lb)
Enclosure Material	SGCC Steel

Hardware

Total Non-Blocking Throughput	380 Gbps
Switching Capacity	760 Gbps
Forwarding Rate	565.44 Mpps
Max. Power Consumption	100W
Power Method	(1) Universal AC input, 100-240VAC, 2A Max, 50/60 Hz (1) USP-RPS DC input, 11.5VDC, 8.7A
Power Supply	AC/DC, Internal, 100W
Networking Interfaces	(28) 1/10 Gbps SFP+ Ethernet (4) 1/10/25 Gbps SFP28 Ethernet*
LCM Display	(1) 1.3" Touchscreen Bootup Animation: Bootup in Progress Firmware Upgrade Icon: Firmware Upgrading Steady White: Factory Defaults, Awaiting Adoption Steady Blue: Device is Adopted
LEDs	SFP28/SFP+: White, Link and Activity
Management Interface	Ethernet In-Band
Modes	SMB Layer 3 10/25 G Fiber Switch
ESD/EMP Protection	Air: ± 16kV, Contact: ± 12kV
Operating Temperature	-5 to 40° C (23 to 104° F)
Operating Humidity	10 - 90% Noncondensing
Certifications	CE, FCC, IC

*The four SFP28 ports don't support mixed speed at 25Gbps mode. Once one of the SFP28 ports is configured at 25Gbps mode, the others will be limited at 25Gbps too. The SFP28 ports only support mixed speed when all ports are at 1Gbps or 10Gbps.



Specifications are subject to change. Ubiquiti products are sold with a limited warranty described at www.ui.com/support/warranty

©2020 Ubiquiti Inc. All rights reserved. Ubiquiti, Ubiquiti Networks, the Ubiquiti U logo, the Ubiquiti beam logo, UniFi, and UniFi Network are trademarks or registered trademarks of Ubiquiti Inc. in the United States and in other countries. All other trademarks are the property of their respective owners.