

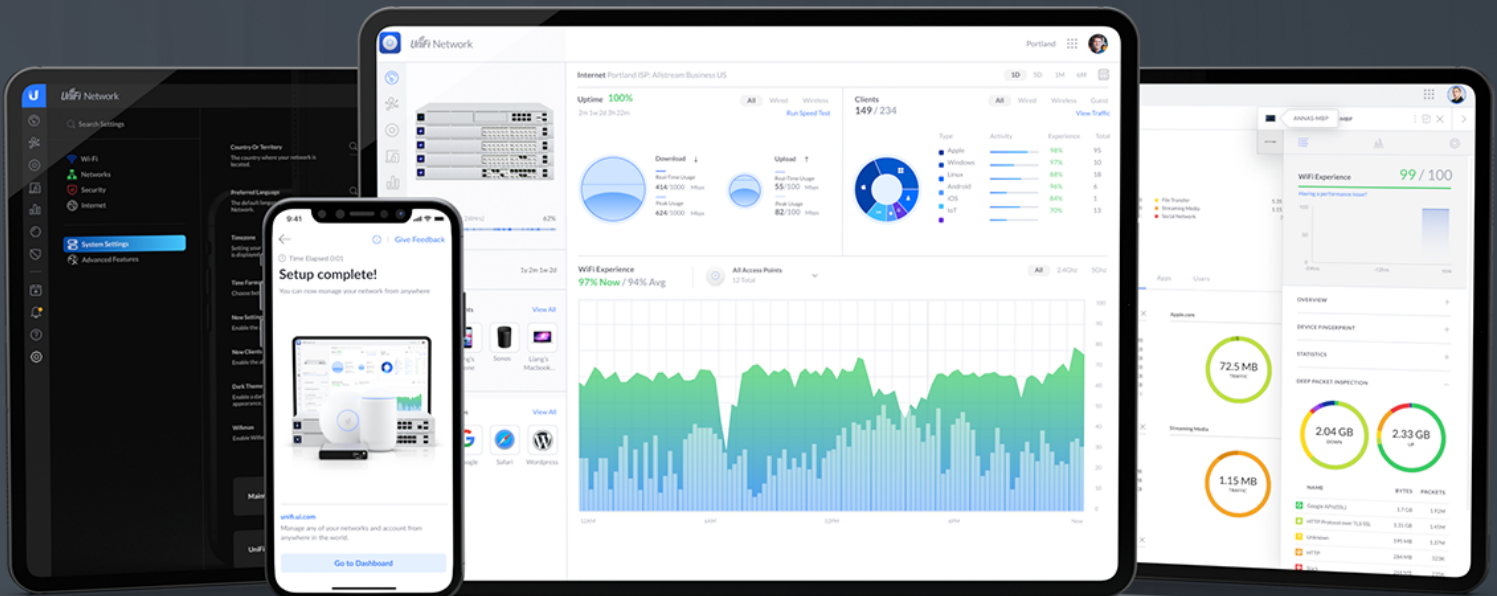
Twoja Infrastruktura IT

netf.pl

NETF, specjalizujemy się w sprzedaży zaawansowanej infrastruktury IT. Znajdą tu Państwo szeroki asortyment produktów od czołowych światowych producentów sprzętu i oprogramowania IT, w tym H3C, Huawei, Cisco, Juniper, Fortinet, a także Dell, IBM, CommVault i ESET. Dzięki współpracy z tymi renomowanymi partnerami, NETF zapewnia swoim klientom dostęp do najnowocześniejszych rozwiązań technologicznych.

**Bezpieczeństwo,
Efektywność,
Optymalizacja**





Switch Enterprise 48 PoE

Layer 3 switch with (48) 2.5GbE RJ45 ports with PoE+ support for WiFi 6 access points and (4) 10G SFP+ ports.

The Switch Enterprise 48 PoE (USW Enterprise 48 PoE) is a configurable, Layer 3 switch with (48) auto-sensing, 2.5GbE RJ45 ports that can deliver 802.3af/at PoE+ to WiFi 6 access points, as well as (4) 10G SFP+ ports to supply you with additional fiber uplink options. The USW Enterprise 48 PoE also offers an extensive suite of advanced Layer 2 switching protocols, including port-specific operation modes (switching, mirroring, or aggregate). Additionally, it features a 1.3" LCM color touchscreen that simplifies system and connection management when used with the UniFi Network mobile app's AR switch scanning feature. The USW Enterprise 48 PoE can be fully managed and configured with either the UniFi Network web application or mobile app.



Mechanical

Dimensions	442 x 44 x 400 mm (17.4 x 1.7 x 15.7")
Weight	Without mount: 6.2 kg (13.67 lb) With mount: 6.3 kg (13.89 lb)
Enclosure material	SGCC steel
Mount material	SGCC steel

Hardware

Total non-blocking throughput	160 Gbps
Switching capacity	320 Gbps
Forwarding rate	238.095 Mpps
Max. power consumption (excluding PoE output)	150 W
Power method	(1) Universal AC input, 100-240VAC, 10A Max, 50/60 Hz (1) USP-RPS DC input, 52VDC, 13.84A; 11.5VDC, 13A
Power supply	AC/DC, internal, 100-240V, 10A max.
Management interface	Ethernet in-band
Networking interfaces	(48) 100MbE/1GbE/2.5GbE RJ45 port
SFP+ interfaces	(4) 1G/10G SFP+ ports
PoE interfaces	(48) PoE+ IEEE 802.3af/at (pins 1, 2+; 3, 6-)
Total PoE supply	720 W
Max. PoE+ wattage per port by PSE	34.2 W
Voltage range 802.3af mode	44 to 57V
Voltage range 802.3at mode	50 to 57V
Services	SMB Layer 3 PoE Gigabit Ethernet switch
ESD/EMP protection	Air: ± 16 kV, contact: ± 12 kV
Display	(1) 1.3" LCM color touchscreen Bootup animation: bootup in progress Firmware update icon: firmware updating Steady white: factory defaults, awaiting adoption Steady blue: device is adopted
Button	Factory reset
Operating temperature	-5 to 40° C (23 to 104° F)
Operating humidity	10 - 90% noncondensing
Certifications	CE, FCC, IC



LEDs

Ethernet

White: [link or activity](#)

SFP+

White: [link or activity](#)



Specifications are subject to change. Ubiquiti products are sold with a limited warranty described at www.ui.com/support/warranty

©2020 Ubiquiti Inc. All rights reserved. Ubiquiti, Ubiquiti Networks, the Ubiquiti U logo, the Ubiquiti beam logo, UniFi, and UniFi Network are trademarks or registered trademarks of Ubiquiti Inc. in the United States and in other countries. All other trademarks are the property of their respective owners.