

Twoja Infrastruktura IT

netf.pl

NETF, specjalizujemy się w sprzedaży zaawansowanej infrastruktury IT. Znajdą tu Państwo szeroki asortyment produktów od czołowych światowych producentów sprzętu i oprogramowania IT, w tym H3C, Huawei, Cisco, Juniper, Fortinet, a także Dell, IBM, CommVault i ESET. Dzięki współpracy z tymi renomowanymi partnerami, NETF zapewnia swoim klientom dostęp do najnowocześniejszych rozwiązań technologicznych.

**Bezpieczeństwo,
Efektywność,
Optymalizacja**





airPRISM[®]

5 GHz, 3x30° HD Sector Antenna

Model: AP-5AC-90-HD

Powerful Performance for High-Density Areas

3 x 30° Beamwidth Coverage in a MultiPoint Network

Efficient Footprint for Reduced Tower Costs

Overview

Ubiquiti Networks introduces an innovative sector antenna for your Point-to-MultiPoint (PtMP) applications, the airPrism[®] 5 GHz 3x30° HD Sector Antenna.

The airPrism antenna features significant advances in noise isolation and beam performance to complement the Rocket[®]5ac Prism[™] radios (not included) for co-location deployments.

Breakthrough Design

Three Rocket5ac Prism radios mounted on a single airPrism antenna maximizes throughput in an efficient tower footprint, minimizing installation and tower costs.

Powerful Performance

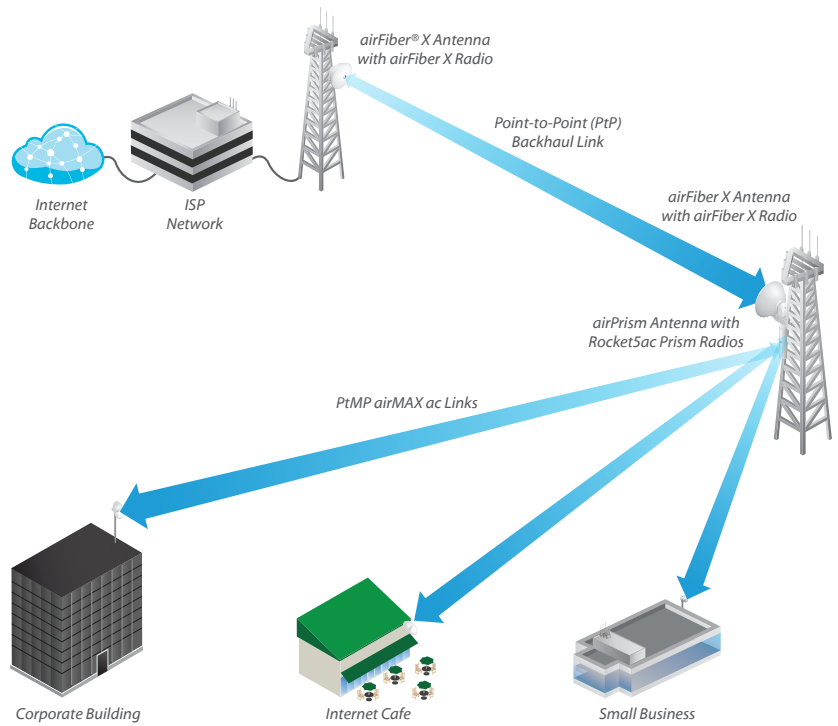
Highly resistant to noise interference, the airPrism antenna provides superior beam performance in high-density areas for high-capacity, multipoint networks.

Plug and Play Integration

The airPrism antenna and Rocket5ac Prism radios have been designed to seamlessly work together. Every airPrism antenna has three built-in Rocket radio mounts, so installation requires no special tools.

Snap the three Rocket5ac Prism radios securely into place and mount the antenna for your PtMP link.

Application Example



Beamwidth

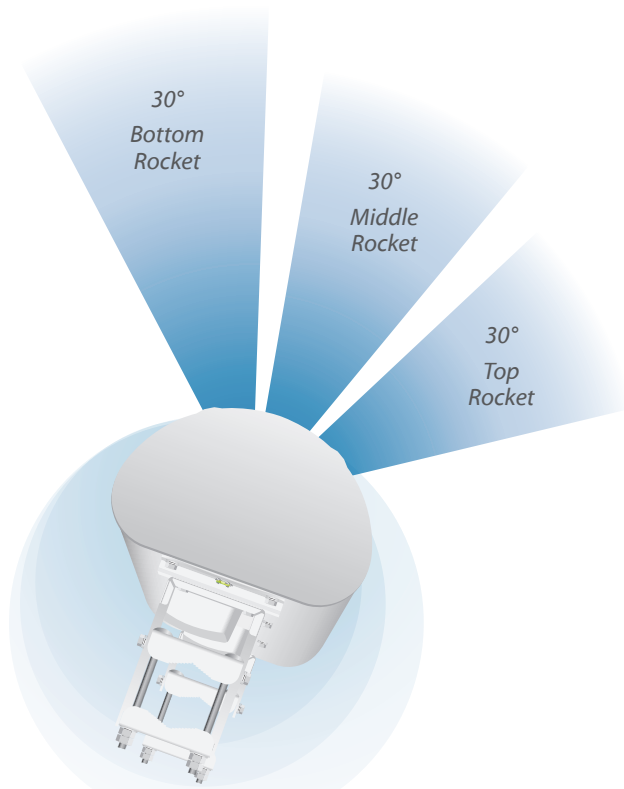
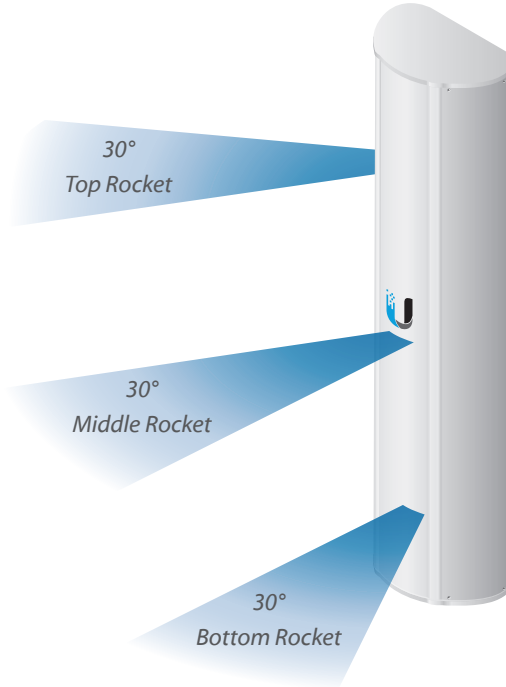
The three Rocket5ac Prism radios are installed at the top, middle, and bottom of the airPrism antenna. Each radio independently transmits and receives within its corresponding 30° beamwidth.

Refer to the diagrams below for a visual representation of the beamwidth coverage.

Channel Offset

The size of the required offset depends on the channel width.

| Channel Width | Separation |
|---------------|------------|
| 10 MHz | 20 MHz |
| 20 MHz | 30 MHz |
| 30 MHz | 50 MHz |
| 40 MHz | 60 MHz |



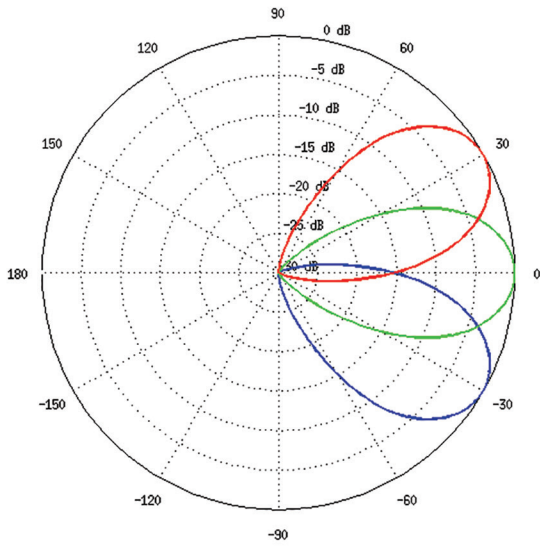
AP-5AC-90-HD Specifications

| Antenna Characteristics | |
|------------------------------|---|
| Dimensions* | 322.6 x 201.5 x 1300 mm (12.7 x 7.93 x 51.18") |
| Weight** | 13.1 kg (28.9 lb) |
| Frequency Range | 5.15 - 5.85 GHz |
| Gain | 22 dBi |
| HPOL Beamwidth | 3 x 30° (6 dB) |
| VPOL Beamwidth | 3 x 30° (6 dB) |
| Electrical Beamwidth | 8° |
| Electrical Downtilt | 2° |
| Max. VSWR | 1.75:1 |
| Polarization | Dual-Linear |
| Cross-Polarization Isolation | 30 dB Min. |
| Interfaces | (6) RP-SMA Connectors (Weatherproof) |
| Compatible Radio | Rocket5ac Prism, model R5AC-PRISM |
| Wind Loading | 534 N @ 200 km/h (120 lbf @ 125 mph) |
| Wind Survivability | 200 km/h (125 mph) |
| Mounting | Universal Pole Mount, Rocket Bracket, and Weatherproof RF Connectors Included |
| ETSI Specification | EN 302 326 DN2 |
| Certifications | CE, FCC, IC |

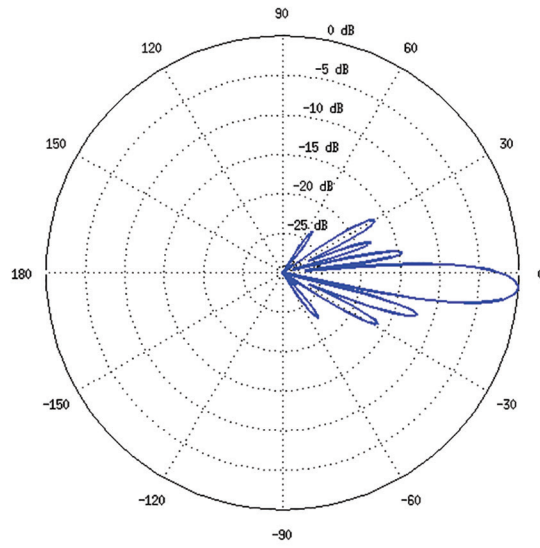
* Dimensions exclude pole mount and Rocket5ac Prism (Rocket5ac Prism sold separately)

** Weight includes pole mount and excludes Rocket5ac Prism (Rocket5ac Prism sold separately)

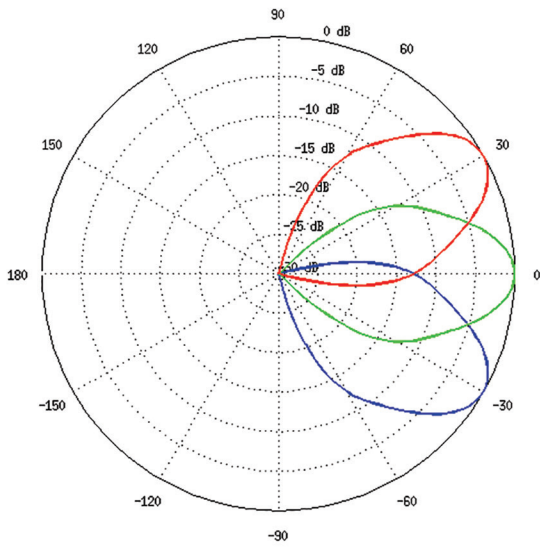
Vertical Azimuth



Vertical Elevation



Horizontal Azimuth



Horizontal Elevation

