

# Twoja Infrastruktura IT

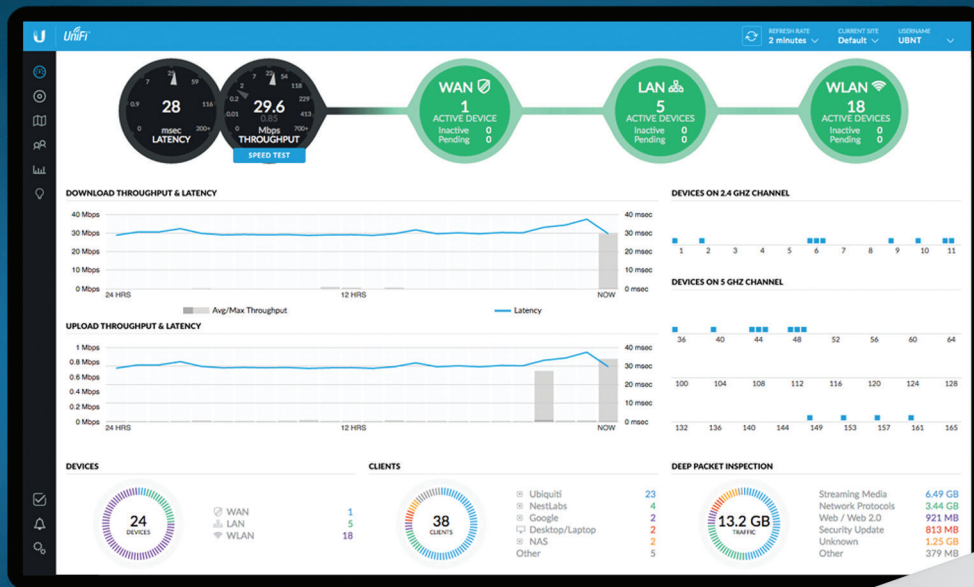
## netf.pl

NETF, specjalizujemy się w sprzedaży zaawansowanej infrastruktury IT. Znajdą tu Państwo szeroki asortyment produktów od czołowych światowych producentów sprzętu i oprogramowania IT, w tym H3C, Huawei, Cisco, Juniper, Fortinet, a także Dell, IBM, CommVault i ESET. Dzięki współpracy z tymi renomowanymi partnerami, NETF zapewnia swoim klientom dostęp do najnowocześniejszych rozwiązań technologicznych.

---

**Bezpieczeństwo,  
Efektywność,  
Optymalizacja**





# UniFi® | SECURITY GATEWAY

Enterprise Gateway Router with Gigabit Ethernet

Models: USG, USG-PRO-4

Advanced Security, Monitoring, and Management

Sophisticated Routing Features

Integrated with UniFi® Controller Software



# UniFi® SECURITY GATEWAY

## Affordable Enterprise Network Security

Ubiquiti Networks introduces the UniFi® Security Gateway, which extends the UniFi Enterprise System to encompass routing and security for your network.

The UniFi Security Gateway combines reliable security features with high-performance routing technology in a cost-effective unit.

Two models are available:

- **USG-PRO-4** Rack-mountable form factor with fiber connectivity options and a dual-core, 1 GHz processor for maximum hardware-accelerated performance.
- **USG** Wall-mountable form factor with a dual-core, 500 MHz processor for standard hardware-accelerated performance.

## Powerful Firewall Performance

The UniFi Security Gateway offers advanced firewall policies to protect your network and its data.

## Convenient VLAN Support

The UniFi Security Gateway can create virtual network segments for security and network traffic management.

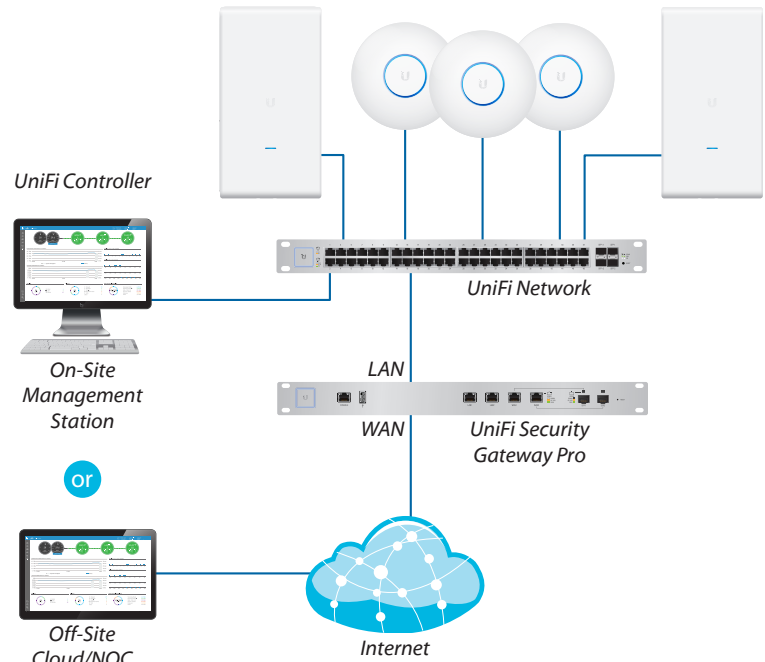
## VPN Server for Secure Communications

A site-to-site VPN secures and encrypts private data communications traveling over the Internet.

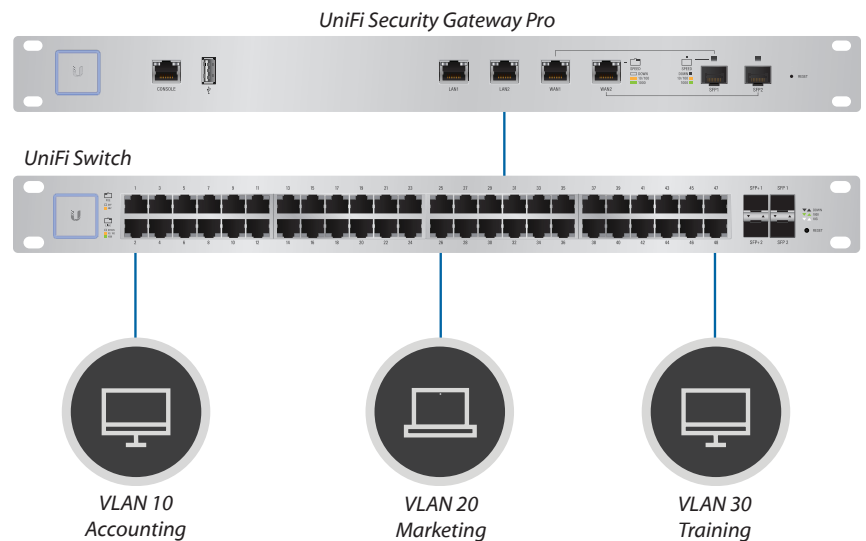
## QoS for Enterprise VoIP and Video

Top QoS priority is assigned to voice and video traffic for clear calls and lag-free, video streaming.

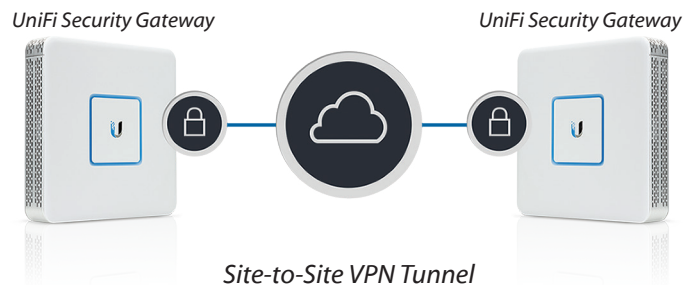
The UniFi Security Gateway is deployed in the same manner as UniFi Access Points for wireless networking. Use the intuitive UniFi Controller to conduct device detection, provisioning, and management.



Example of a UniFi Enterprise System



Network Segmentation with VLAN



Site-to-Site VPN Tunnel

# UniFi Controller

Introducing the new UniFi Controller software featuring a refreshed UI and support for the next generation of UniFi devices.

## Improved User Experience

Redesigned to be more intuitive and easier to navigate, the new UI raises the bar for enterprise network management efficiency. Important network details are logically organized for a simplified, yet powerful, interface.

## Packed with Features

Use the UniFi Controller to provision thousands of UniFi APs and UniFi Security Gateways, map out networks, quickly manage system traffic, and provision additional UniFi devices.

## Network Overview

A comprehensive overview of your Network Health is readily available in the new dashboard. Monitor your network's vitals and make on-the-fly adjustments as needed.

## Detailed Analytics

Use the configurable reporting and analytics to monitor large user groups and expedite troubleshooting. Advanced search and sorting capabilities make network management more efficient.

## Multi-Site Management

A single UniFi Controller running in the cloud can manage multiple sites: multiple, distributed deployments and multi-tenancy for managed service providers. Each site is logically separated and has its own configuration, maps, statistics, guest portal, and administrator read/write and read-only accounts.

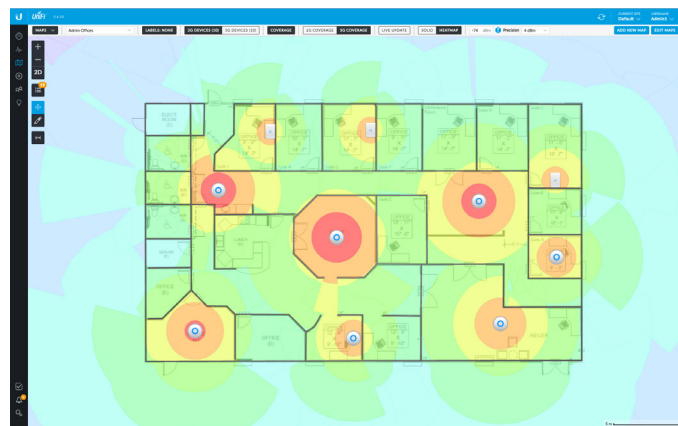
## LAN/WLAN Groups

The UniFi Controller can manage flexible configurations of large deployments. Create multiple LAN and WLAN groups and assign them to the respective UniFi devices.



## Dashboard

UniFi provides a visual representation of your network's status and delivers basic information about each network segment.



## Maps

Upload a map of your location(s) or use Google Maps to represent the areas where your UniFi devices are located. Starting with v5.6.x, you can also use the predictive map feature to get a preview of coverage, so you can help avoid dead spots.

DEVICE NAME	IP ADDRESS	STATUS	MODEL	VERSION	UPTIME	ACTIONS
Rack USG Pro-4	192.168.1.1	CONNECTED	UniFi Security Gateway AP	4.3.11-4832827	34 55h 45s	LOCATE RESTART
AP0-US-16-150W	192.168.1.233	CONNECTED	UniFi Switch 16 POC-150W	3.5.1-4098	39h 28m 45m 7s	LOCATE RESTART
Downstairs US-48-500W	192.168.1.231	CONNECTED	UniFi Switch 48 POC-500W	3.5.1-4098	4h 22m 55m 15s	LOCATE RESTART
Workshop US-48-700W	192.168.1.248	CONNECTED	UniFi Switch 48 POC-700W	3.5.1-4098	3h 22m 12m 15s	LOCATE RESTART
Rack US-48-700W	192.168.1.9	CONNECTED	UniFi Switch 48 POC-700W	3.5.1-4098	4h 22m 55m 29s	LOCATE RESTART
9thFloor US-6-150W	192.168.1.304	CONNECTED	UniFi Switch 6 POC-150W	3.5.1-4098	5h 0m 12m 17s	LOCATE RESTART
AC-Browser	192.168.1.201	CONNECTED			4h 22m 55m 4s	LOCATE RESTART
AC-LTE	192.168.1.142	CONNECTED			3h 22m 37m 32s	LOCATE RESTART
AC-L-Browser	192.168.1.137	CONNECTED			4h 22m 56m 4s	LOCATE RESTART
AC-L-Phone	192.168.1.197	CONNECTED			3h 22m 31m 32s	LOCATE RESTART
44-49x2 P2-0463	192.168.1.196	CONNECTED			3h 22m 36m 8s	LOCATE RESTART
AC-Pro-Browser	192.168.1.7	CONNECTED			4h 22m 55m 31s	LOCATE RESTART
44-49x2 P1-0269	192.168.1.200	CONNECTED			4h 22m 55m 44s	LOCATE RESTART
Provisioned UAP-AC-Pro	192.168.1.182	CONNECTED			5h 0m 12s	LOCATE RESTART
AC-Pro-CrowdSpace	192.168.1.124	CONNECTED			3h 22m 37m 14s	LOCATE RESTART
Timeout	192.168.1.225	CONNECTED			5h 0m 14s	LOCATE RESTART
Living	192.168.1.126	CONNECTED			5h 0m 34s	LOCATE RESTART
9thFlr	192.168.1.124	CONNECTED			5h 0m 54s	LOCATE RESTART
Master	192.168.1.128	CONNECTED			5h 0m 32s	LOCATE RESTART
UPH	192.168.1.139	CONNECTED			5h 0m 25s	LOCATE RESTART
Basement	192.168.1.140	CONNECTED			5h 0m 25s	LOCATE RESTART
24-48x2-94-2749	192.168.1.122	CONNECTED	UniFi AP-Cluster1	3.5.1-4098	3h 17m 22m 14s	LOCATE RESTART
Pro-repeater2	192.168.1.144	CONNECTED	UniFi AP-Pro	3.5.1-4098	5h 0m 29m 24s	LOCATE RESTART
Pro-repeater1	192.168.1.141	CONNECTED	UniFi AP-Pro	3.5.1-4098	3h 22m 36m 49s	LOCATE RESTART

## Device Configuration

The *Devices* screen displays a list of UniFi devices discovered by the UniFi Controller. You can access each managed device for device details and configuration.

# UniFi® SECURITY GATEWAY PRO

## Model: USG-PRO-4

The USG-PRO-4 offers optional SFP ports for fiber connectivity to support backhaul applications.

- (2) 10/100/1000 RJ45 LAN Ports
- (2) 1 Gbps RJ45/SFP Combination WAN Ports\*
- (1) RJ45 Serial Console Port
- Rack-Mounting Capability
- Layer 3 Forwarding Performance
- Packet Size of 64 Bytes: 2,400,000 pps
- Packet Size of 512 Bytes or Larger: 4 Gbps (Line Rate)

\* The USG-PRO-4 WAN port, as a result of being a combination SFP/GigE port, is a pure 1 Gbps port – it is incapable of both 10 Mbps and 100 Mbps FDX/HDX settings.



Front Panel



Back Panel

# UniFi® SECURITY GATEWAY

## Model: USG

The USG features a compact form factor and fanless operation for discreet integration.

- (3) 10/100/1000 RJ45 Ports\*
- (1) RJ45 Serial Console Port
- Quiet, Fanless Operation
- Wall-Mounting Capability
- Layer 3 Forwarding Performance
  - Packet Size of 64 Bytes: 1,000,000 pps
  - Packet Size of 512 Bytes or Larger: 3 Gbps (Line Rate)

\* VOIP port is available for port remapping in UniFi v5.



Top Panel



Front Panel

# Specifications

UniFi USG-PRO-4	
Dimensions	484 x 44 x 164 mm (19.06 x 1.73 x 6.46")
Weight	2.3 kg (5.07 lb)
Max. Power Consumption	40W
Power Supply	Internal AC/DC Power Adapter, 60W (24V, 2.5A)
Power Input	110 - 240VAC
LEDs	Status
System	Speed/Link/Activity
Data Ports	
Networking Interfaces	
Serial Console Port	(1) RJ45 Serial Port
Data Ports	(2) 10/100/1000 RJ45 LAN Ports (2) 1 Gbps RJ45/SFP Combination WAN Ports
Layer 3 Forwarding Performance	
Packet Size: 64 Bytes	2,400,000 pps
Packet Size: 512 Bytes or Larger	4 Gbps (Line Rate)
Processor	Dual-Core 1 GHz, MIPS64 with Hardware Acceleration for Packet Processing
System Memory	2 GB DDR3 RAM
On-Board Flash Storage	4 GB
Certifications	CE, FCC, IC
Rackmount	Yes
Operating Temperature	-10 to 45° C (14 to 113° F)
Operating Humidity	10 to 90% Noncondensing



## Specifications

UniFi USG	
Dimensions	135 x 135 x 28.3 mm (5.32 x 5.32 x 1.11")
Weight	366 g (12.9 oz)
Max. Power Consumption	7W
Power Supply	12VDC, 1A Power Adapter (Included)
Power Input	9 to 24VDC, Supported Voltage Range
LEDs	
System	Status
Serial Console Port	Power
Data Ports	Speed/Link/Activity
Networking Interfaces	
Serial Console Port	(1) RJ45 Serial Port
Data Ports	(3) 10/100/1000 Ethernet Ports*
Layer 3 Forwarding Performance	
Packet Size: 64 Bytes	1,000,000 pps
Packet Size: 512 Bytes or Larger	3 Gbps (Line Rate)
Processor	Dual-Core 500 MHz, MIPS64 with Hardware Acceleration for Packet Processing
System Memory	512 MB DDR2 RAM
On-Board Flash Storage	2 GB
Certifications	CE, FCC, IC
Wall-Mountable	Yes
Operating Temperature	-10 to 45° C (14 to 113° F)
Operating Humidity	10 to 90% Noncondensing

\* VOIP port is available for port remapping in UniFi v5.



Specifications are subject to change. Ubiquiti products are sold with a limited warranty described at: [www.ubnt.com/support/warranty](http://www.ubnt.com/support/warranty)  
 ©2014-2017 Ubiquiti Networks, Inc. All rights reserved. Ubiquiti, Ubiquiti Networks, the Ubiquiti U logo, the Ubiquiti beam logo, and UniFi are trademarks or registered trademarks of Ubiquiti Networks, Inc. in the United States and in other countries. All other trademarks are the property of their respective owners.



[www.ubnt.com](http://www.ubnt.com)