

Twoja Infrastruktura IT

netf.pl

NETF, specjalizujemy się w sprzedaży zaawansowanej infrastruktury IT. Znajdą tu Państwo szeroki asortyment produktów od czołowych światowych producentów sprzętu i oprogramowania IT, w tym H3C, Huawei, Cisco, Juniper, Fortinet, a także Dell, IBM, CommVault i ESET. Dzięki współpracy z tymi renomowanymi partnerami, NETF zapewnia swoim klientom dostęp do najnowocześniejszych rozwiązań technologicznych.

**Bezpieczeństwo,
Efektywność,
Optymalizacja**



NETGEAR 5-Port Multi-Gigabit (2.5G) Ethernet Unmanaged Switch



Control and Configure Beyond Plug-and-Play Connectivity

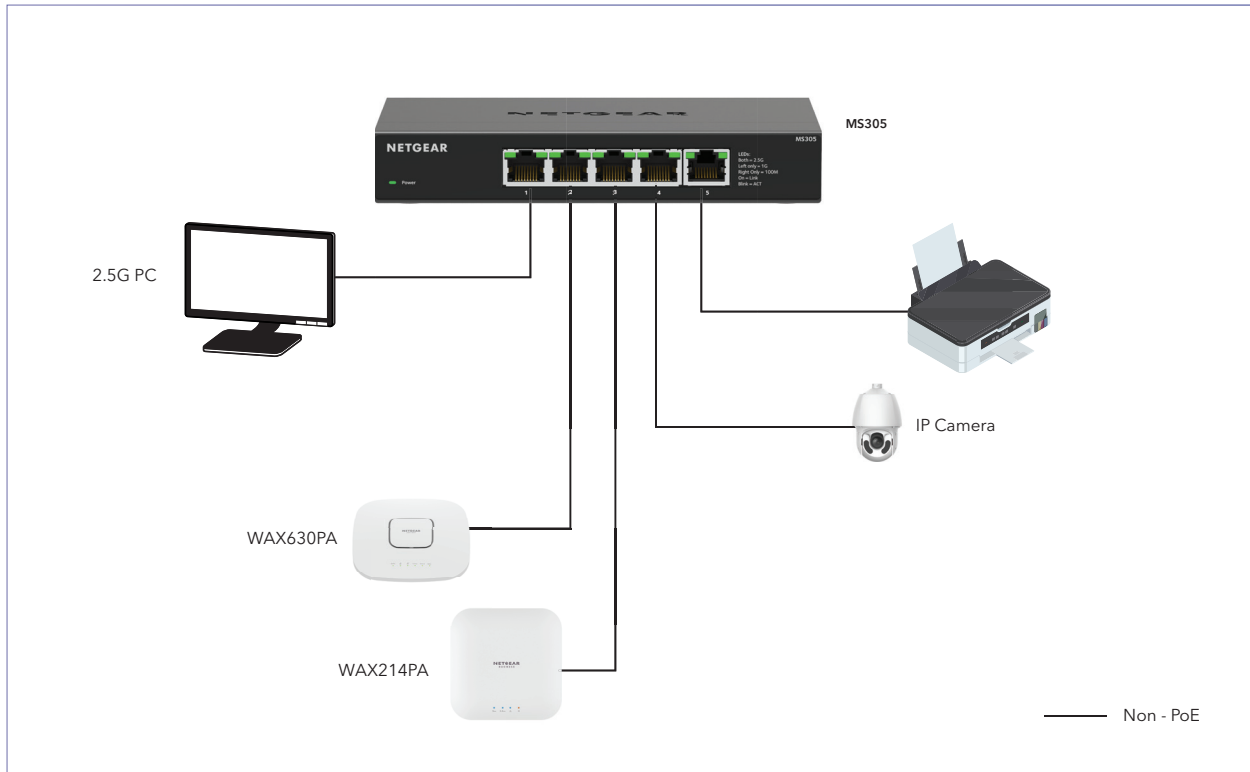
The NETGEAR 5-port Multi-Gigabit Unmanaged Switch, MS305, help businesses cost effectively expand their networks with multi-gig speeds. The MS305 Multi-Gigabit Ethernet switch comes with five (5) 2.5G ports in a metal case and can be placed on a desk or mounted on a wall with the included wall-mount kit. This switch is energy efficient, built to last, and rigorously tested to provide the reliability businesses need. 802.1p traffic prioritization and jumbo frame support allow for seamless integration with more sophisticated networks.

Highlights

- Simple set up with no software or configuration needed.
- Flexible desktop or wall placement.
- Easy monitoring through per port LEDs for port activity and speed.
- Energy Efficient Ethernet (IEEE 802.3az) support for maximum power savings.
- 5 ports of multi-gig 1G/2.5G speeds to connect devices instantly and give them each exactly the speed they need: 1G or 2.5G automatically.
- Non-blocking switching architecture for maximum throughput at wire speed.
- Fanless, silent operation with desktop and wall mounting options.

Application Sample

Multi-Gig for higher bandwidth



Technical Specifications

Features	MS305
1G/2.5G Ethernet RJ-45 Copper ports (100M/1G/2.5G)	5
Enclosure	Metal
Connector type	Metal
Form-Factor	Desktop/Wall mount
Performance Specifications	
Bandwidth	25Gbps
Max MAC entries	16K
Buffer size	1MB
Energy Efficient Ethernet (IEEE 802.3az) compliant	Yes
Queue WRR Ratio	1:3:5:7:8:10:12:15
Forwarding Rate (using 64-byte packets) - 1000Mbps Port	1,488,000pps
Forwarding Rate (using 64-byte packets) - 2.5Gbps Port	3,720,000pps
Latency (using 64-byte packets) - 1000Mbps Port (average)	<2.458μs
Latency (using 64-byte packets) - 2.5Gbps Port (average)	<5.773μs
Jumbo frame support	9,720 bytes
Acoustic noise level @ 25° C (dBA) (ANSI-S10.12)	0
Auto MDI/MDI-X Cable Detection	Yes
Auto-sensing Half/Full Duplex Switched Ports	Yes
Non Head-of-Line Blocking Architecture	Yes
Mean Time Between Failures (MTBF) @ 25° C	1,401,743 hrs (159.9 yrs)
IEEE Network Protocols	
<ul style="list-style-type: none"> • IEEE 802.3 Ethernet • IEEE 802.3bz 2.5GBASE-T • IEEE 802.3ab 1000BASE-T • IEEE 802.3u 100BASE-TX Fast Ethernet 	<ul style="list-style-type: none"> • IEEE 802.1p Priority • IEEE 802.3az Energy Efficient Ethernet (deactivated by default) • IEEE 802.3 CSMA/CD • IEEE 802.3x Full-duplex Flow Control
Quality of Service	
802.1p-based QoS/CoS Supported	Yes
Honors DSCP (DiffServ) Tags	Yes

NETGEAR 5-Port Multi-Gigabit (2.5G) Ethernet Unmanaged Switch

LEDs	
Per port	Speed, Link, Activity
Per device	Power
Power Consumption	
DC Input/Power In	External (12V/1.0A)
Power Consumption (Max and Standby)	9.24W (Max)/4.60W Min/Standby (no PoE)
Heat Dissipation (Max and Standby) (BTU/Hr)	31.545BTU/15.704BTU
Energy Efficiency	
IEEE 802.3az (Energy Efficient Ethernet)	Yes
Auto Power Down	Yes
Short Cable Detection/Power Saving	Yes
Fan/Fanless	Fanless
Physical Specifications	
Dimensions (W x D x H)	158 x 101 x 29 mm (6.2 x 4.0 x 1.1 in)
Weight	0.48 kg (1.06 lb)
Environmental Specifications	
Operating	
Operating Temperature	32° to 104°F (0° to 40°C)
Humidity (relative)	90% maximum relative humidity (RH), non-condensing
Altitude	10,000 ft (3,000 m) maximum
Storage	
Storage Temperature	- 4° to 158°F (-20° to 70°C)
Humidity (relative)	95% maximum relative humidity (RH), non-condensing
Altitude	10,000 ft (3,000 m) maximum
Electromagnetic Certifications and Compliance	
CE, FCC part 15 Class B, ISED, VCCI, KC, CCC, BSMI, RCM	
Safety Certifications	
CB, CSA, CCC, BSMI, RCM, CE LVD	
Warranty and Support	
Hardware warranty	3 year warranty
Hardware warranty (China)	1 year warranty
External power adapter warranty	N/A
Technical support (online, phone)	90 days free with registration from the date of purchase*
ProSUPPORT OnCall 24x7 service plans	Category S2 PMB0S12 (1-yr) PMB0S32 (3-yrs) PMB0S52 (5-yrs)

NETGEAR 5-Port Multi-Gigabit (2.5G) Ethernet Unmanaged Switch

Package Contents	
All Models	<ul style="list-style-type: none"> NETGEAR Unmanaged Switch Power Adapter Wall installation kit Rubber feet Installation guide
Ordering Information	
MS305-100AUS	Australia
MS305-100EUS	Europe including United Kingdom
MS305-100JPS	Japan
MS305-100NAS	North America

*This product comes with a limited warranty that is valid only if purchased from a NETGEAR authorized reseller, and covers unmodified hardware, fans and internal power supplies - not software or external power supplies, and requires product registration at <https://www.netgear.com/business/registration> within 90 days of purchase; see <https://www.netgear.com/about/warranty> for details. Intended for indoor use only.

**The NETGEAR OnCall 24x7 contract provides unlimited phone, chat and email technical support for your networking product.

NETGEAR, the NETGEAR Logo, and NETGEAR Insight are trademarks of NETGEAR, Inc. in the United States and/or other countries. Other brand names mentioned herein are for identification purposes only and may be trademarks of their respective holder(s). Information is subject to change without notice. ©NETGEAR, Inc. All Rights reserved.
NETGEAR, Inc. 350 E. Plumeria Drive, San Jose, CA 95134-1911 USA, 1-888-NETGEAR (638-4327), E-mail: info@NETGEAR.com, www.NETGEAR.com