

Twoja Infrastruktura IT

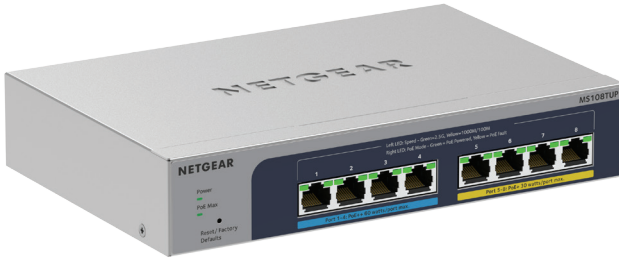
netf.pl

NETF, specjalizujemy się w sprzedaży zaawansowanej infrastruktury IT. Znajdą tu Państwo szeroki asortyment produktów od czołowych światowych producentów sprzętu i oprogramowania IT, w tym H3C, Huawei, Cisco, Juniper, Fortinet, a także Dell, IBM, CommVault i ESET. Dzięki współpracy z tymi renomowanymi partnerami, NETF zapewnia swoim klientom dostęp do najnowocześniejszych rozwiązań technologicznych.

**Bezpieczeństwo,
Efektywność,
Optymalizacja**



NETGEAR 8-port Ultra60 PoE++ Multi-Gigabit (2.5G) Ethernet Smart Switch



High-speed and Powerful Network with a Compact Switch

NETGEAR Smart Switches with PoE meet business networks growing needs by providing powerful Layer 2+/Lite L3 features, great PoE functionality, and enhanced performance and usability that can support the business's needs to keep up with the growth of network speed, virtualization, cloud-based services and applications like VoIP, video streaming and IP surveillance, whether in the hospitality, catering, education or retail domains. Also,

the increase in speeds for WiFi 6 access points now imply the need for faster speeds in the network. The MS108TUP supports 2.5 Gigabit speed connectivity and Power-Over-Ethernet (PoE) that can provide up to 60W/port. The new switch model can power devices such as VoIP phones, surveillance IP cameras, wireless access points and many other applications. This new Smart switch includes advance PoE control to help optimize

the performance and troubleshooting of business networks. The new and improved business-friendly GUI allows easy management and simple configuration. With the growing deployment of applications and an all-in-one solution, providing management and power to these applications would be ideal. The MS108TUP has the option to be remotely controlled through the NETGEAR Insight Remote Cloud Management platform.

Highlights

- 802.3bt standard offering up to 60W/port on Port 1-4, 802.3at (30W/port) on Port 5-8
- Business-friendly and easy-to-use web browser-based management GUI
- VLAN support for traffic segmentation
- Quality of Service (QoS) for traffic prioritization
- Auto "denial-of-service" (DoS) prevention
- Troubleshoot connection issues via cable test
- L2/L3/L4 access control lists (ACLs) for granular network access control including 802.1x port authentication
- IGMP Snooping and Querier for multicast optimization
- IPv6 management: IPv6 QoS, IPv6 ACL, IPv6 Static Routing, and static and dynamic IPv6 address assignment
- SNMP v1, v2c, v3 and RMON remote monitoring
- Uninterrupted PoE to ensure power stays on during software upgrade and soft reboot
- PoE Self-healing to reboot PoE-connected devices when they fall offline or go unresponsive.
- Energy Efficient Ethernet (IEEE 802.3az) support for maximum power savings
- Loop prevention and broadcast storm controls
- Rate limiting for better bandwidth allocation
- Port mirroring for network monitoring
- Jumbo frame support
- Advanced features such as per port PoE controls



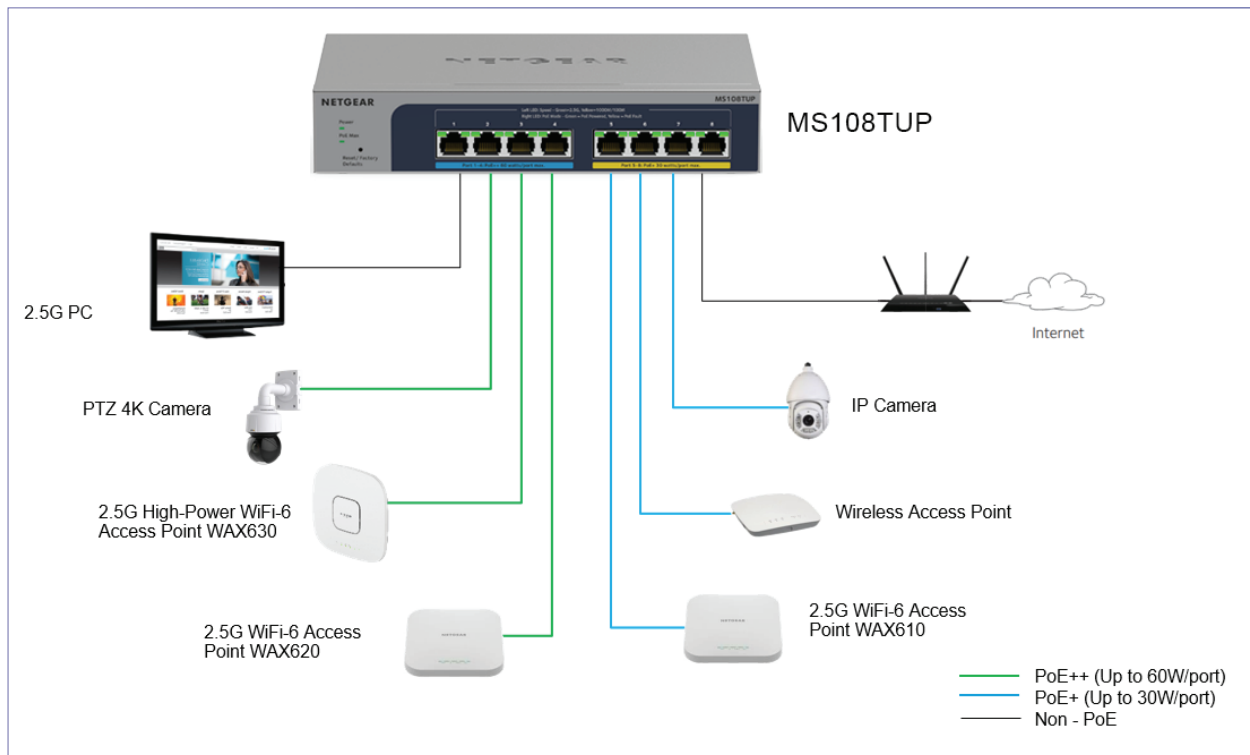
NETGEAR 8-port Ultra60 PoE++ Multi-Gigabit (2.5G) Ethernet Smart Switch

Highlights

- Fanless, silent operation with desktop and wall-mount options
- NETGEAR Insight Remote Cloud Management option available
- Scripting and management via direct text command using Lite Command Line Interface (CLI).
- NETGEAR Switch Discovery Tool (NSDT) to discover, register and access to the local browser interface to configure the switches
- Lifetime 24/7 Chat Technical Support*
- Next-Business-Day Hardware Replacement**
- Limited Lifetime Hardware Warranty

Application Sample

Power The Devices in Your SMB Business



Simply activate NETGEAR Insight Cloud management to manage your network. Anytime. Anywhere.

By activating the NETGEAR Insight Cloud management, the users will enable fundamental management features allowing businesses simpler configuration and deployment from anywhere using the NETGEAR Insight app from mobile devices or the Insight Cloud portal from any device with a web browser.

Unique advanced management features of these Insight managed devices include:

- Remote monitoring and management with performance dashboards and troubleshooting features including remote reboot, port and PoE advanced configuration including remote enable/disable/power-cycle, PoE scheduling, and firmware updates with auto-schedule mode
- Single pane-of-glass multi-device, multi-network, and multi-site remote monitoring and notifications with the NETGEAR Insight app
- Full-fledged local or remote access for configuration, management, and monitoring on a larger display using your tablet, laptop, or desktop computer through the NETGEAR Insight Cloud portal
- Configurable in-app and email alerts and notifications
- Auto-join and configure (zero-touch provisioning) for additional Insight managed devices added to the network
- Centralized network configuration (policies) across Insight managed switches, and access points for VLANs, ACLs, QoS, LAGs, etc.
- Cloud-based network administration, monitoring, and firmware management

For more information about NETGEAR Insight-manageable device settings, please see at:

<https://www.netgear.com/support/product/Insight.aspx>

Technical Specifications

Features	MS108TUP
1G/2.5G Ethernet RJ-45 copper ports (100M/1G/2.5G) - 1000BASE-T	8
Enclosure	Metal
Connector type	Metal
PoE	
# of PoE ports	8
# of PoE/ PoE+ / PoE++ ports	4 PoE+ and 4 PoE++
Total PoE/PoE+ budget	230W
Advanced PoE controls	Yes
PoE scheduling	Yes
Uninterrupted PoE	Yes
PoE Self-healing	Yes
Performance Specifications	
Forwarding modes	Store-and-forward
Bandwidth	40Gbps
Max MAC entries	16K
Buffer size	1.5MB
Energy Efficient Ethernet (IEEE 802.3az) compliant	Yes
Priority queuing	WRR
Jumbo frame support	12,000 bytes
Acoustic noise level @ 25° C (dBA) (ANSI-S10.12)	0 (Fanless)
Mean Time Between Failures (MTBF) @ 25° C	373,643.7 hrs (42.65 yrs)
L2 Services - VLANs	
VLAN (# supported)	64
IEEE 802.1Q VLAN tagging	Yes
Port-based VLANs	Yes
L2 Services - Availability	
Link aggregation/ port trunking	Yes
Number of static manual LAGs and # of members	4 LAG with max 4 members in each LAG
L2 Services - Multicast Filtering	
IGMP snooping (v1, v2 and v3)	Yes
Block unknown multicast	Yes
Supported multicast groups	128
L3 Services - DHCP	
DHCP client	Yes
L2 DHCP relay	Yes

NETGEAR 8-port Ultra60 PoE++ Multi-Gigabit (2.5G)
Ethernet Smart Switch

Quality of Service	
Rate limiting	Yes
DSCP	Yes
IEEE 802.1p COS	Yes
Quality of Service	
Port-based QoS	Yes
TOS	Yes
WRR (Weighted Round Robin)	Yes
Strict Priority queue technology	No
IEEE Network Protocols	
<ul style="list-style-type: none"> • IEEE 802.3 Ethernet • IEEE 802.3bz 2.5GBASE-T • IEEE 802.3ab 1000BASE-T • IEEE 802.3u 100BASE-T • IEEE 802.1p Class of Service • IEEE 802.3az Energy Efficient Ethernet (deactivated by default) 	<ul style="list-style-type: none"> • IEEE 802.3ad Dynamic Link Aggregation (LACP) • IEEE 802.1Q VLAN Tagging • IEEE 802.3x Full-duplex Flow Control • IEEE 802.3af PoE • IEEE 802.3at PoE+ • IEEE 802.3bt PoE++
Management	
Cloud/Remote management	Yes
Insight mobile app & Insight Cloud Portal management	Yes
Networking monitoring	Yes
Data/performance logs	Yes
Centralized network configuration/policies (network-centric management)	Yes
Device auto-join and configure (zero-touch provisioning)	Yes
Multi-site, multi-network single pane-of-glass view	Yes
Multi-switch, multi-port concurrent configuration	Yes
System password	Yes
Web browser based management GUI	Yes
Smart CLI: direct text command using Lite Command Line Interface (CLI)	Yes
PC utility	No
Port mirroring	Yes
Max number of source ports allowed (one-to-one port mirroring)	1
Many-to-one port mirroring	No, 1-to-1 only
Cable test utility	Yes
FW Upgrade thru plus utility (TFTP)	No
Config download (to switch) thru plus utility	No
Config upload (to server)	Yes
LEDs	
Per port	Speed, Link, Activity, PoE
Per device	Power, PoE Max

NETGEAR 8-port Ultra60 PoE++ Multi-Gigabit (2.5G)
Ethernet Smart Switch

Physical Specifications	
Dimensions (W x D x H)	210 x 140 x 40 mm (8.27 x 5.51 x 1.58 in)
Weight	0.9 kg (1.984 lb)
Environmental Specifications	
Operating	
Operating Temperature	32° to 104°F (0° to 40°C)
Humidity (relative)	90% maximum relative humidity (RH), non-condensing
Altitude	10,000 ft (3,000 m) maximum
Storage	
Storage Temperature	- 4° to 158°F (-20° to 70°C)
Humidity (relative)	95% maximum relative humidity (RH), non-condensing
Altitude	10,000 ft (3,000 m) maximum
Electromagnetic Emissions and Immunity	
Certifications	CE mark FCC Part 15 class B CE/EN55032/24 CSA VCCI ACMA KC CCC BSMI
Warranty and Support	
Hardware warranty (All except China/India)	Limited lifetime* warranty
China	5-year warranty
External power adapter warranty	2-year warranty
Technical support (online, phone)	90 days free technical support with registration
ProSUPPORT OnCall 24x7 service plans	Category 2 PMB0312-10000S PMB0332-10000S PMB0352-10000S
Package Contents	
All Models	NETGEAR MS108TUP Smart Switch Power adapter (power cable varies by region) Wall installation kit Rubber feet Installation guide

NETGEAR 8-port Ultra60 PoE++ Multi-Gigabit (2.5G)
Ethernet Smart Switch

Ordering Information

MS108TUP-100NAS	North America
MS108TUP-100EUS	Europe
MS108TUP-100AUS	Australia and New Zealand
MS108TUP-100JPS	Japan
MS108TUP-100INS	India
MS108TUP-100PRS	China
MS108TUP-100KOS	South Korea
MS108TUP-100UKS	Hong Kong and Singapore
MS108TUP-100TWS	Taiwan
MS108TUP-100PES	Other Asia

*This product comes with a limited warranty that is valid only if purchased from a NETGEAR authorized reseller, and covers unmodified hardware, fans and internal power supplies - not software or external power supplies, and requires product registration at <https://www.netgear.com/business/registration> within 90 days of purchase; see <https://www.netgear.com/about/warranty> for details. Intended for indoor use only.

**The NETGEAR OnCall 24x7 contract provides unlimited phone, chat and email technical support for your networking product.

NETGEAR, the NETGEAR Logo, and NETGEAR Insight are trademarks of NETGEAR, Inc. in the United States and/or other countries. Other brand names mentioned herein are for identification purposes only and may be trademarks of their respective holder(s). Information is subject to change without notice. ©NETGEAR, Inc. All Rights reserved.

NETGEAR, Inc. 350 E. Plumeria Drive, San Jose, CA 95134-1911 USA, 1-888-NETGEAR (638-4327), E-mail: info@NETGEAR.com, www.NETGEAR.com

DS-MS108TUP-29Sept23