

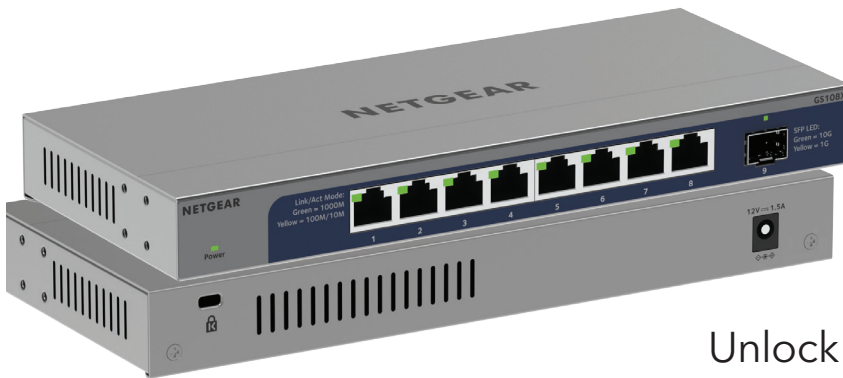
Twoja Infrastruktura IT

netf.pl

NETF, specjalizujemy się w sprzedaży zaawansowanej infrastruktury IT. Znajdą tu Państwo szeroki asortyment produktów od czołowych światowych producentów sprzętu i oprogramowania IT, w tym H3C, Huawei, Cisco, Juniper, Fortinet, a także Dell, IBM, CommVault i ESET. Dzięki współpracy z tymi renomowanymi partnerami, NETF zapewnia swoim klientom dostęp do najnowocześniejszych rozwiązań technologicznych.

**Bezpieczeństwo,
Efektywność,
Optymalizacja**





Unlock the Potential of your Gigabit devices

The GS108X comes with 8 Gigabit Ethernet ports and 10 Gigabit SFP+ uplink port. Gigabit unmanaged switches help businesses cost-effectively expand their network to Gigabit speeds and higher port counts.

This GS108X is energy efficient, built to last, and rigorously tested to provide the reliability businesses need.

802.1p traffic prioritization and jumbo frame support allow for seamless integration with more sophisticated networks.

The GS108X offers flexible mounting options - they can be mounted on a wall or can be used as a desktop switch. Moreover the compact and fanless design makes the GS108X ideal for any home or business environment.

Highlights

Plug-and-Play

- Simple set up with no software to install or configuration needed and zero maintenance

10 Gigabit Uplink

- No network bottlenecks thanks to the 10 Gigabit SFP+ uplink

Flexible Mounting

- Wall-mount or desktop

Small Form Factor

- Compact design to fit in any small cabinet or wiring panel

High Quality and Reliable Performance

- Durable metal case and long product life (shown by MTBF numbers)

Longer Distance Connections

- The 10G SFP+ uplink offers the capacity to maintain high-speed connections over 100 meters (328 feet).

Silent Switches

- Fanless quiet operation

Industry Leading Warranty

- Limited Lifetime* Hardware Warranty



¹ Cat6A or higher cables required for 10Gbps speed.

Hardware at a Glance

Model Name	Form-Factor	10M/100M/1G Copper Ports	10 Gig SFP+ Ports	LED's	Case Material	Fans	Power Supply
GS108X	Desktop/wall-mount	8	1	Power, Port Link/Speed/Activity	Metal	Fanless	External



GS108X: front

- 8 x Gigabit Copper Ports
- 1 x 10 Gig SFP+ Ports



GS108X: back

- External power adapter (varies by region)

Software at a Glance

Model Name	Management	VLANs	EEE (802.3az) Auto-EEE	Jumbo Frame Support
GS108X	Unmanaged	No	Yes	Yes

Performance at a Glance

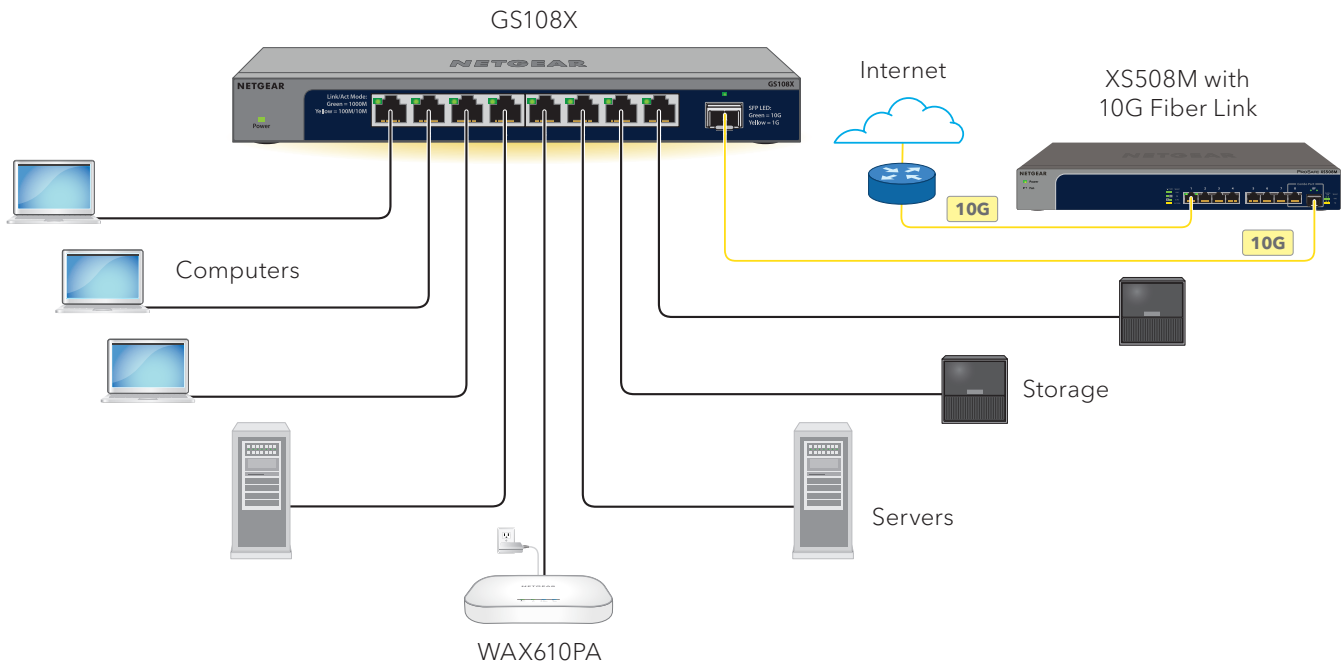
Model Name	Fabric	Packet Buffer	Latency (Max Connection Speed)	MAC Address Table	Priority Queues	Packet Forwarding Rate (64 byte)	Jumbo Frames (bytes)
GS108X	36 Gbps line-rate	768KB	100Mbps: <5µs 1Gbps: <2µs 10Gbps: <1µs	16K Entries (dynamic)	8 (WRR)	41.664Mfps	up to 9728byte

Features and Benefits

Hardware Features	Benefits
Compact form factor with fanless design	Adapts to your needs and configuration in any environment, even noise-sensitive (in a classroom, in a conference room, in a doctor's office...)
Flexible Mounting Options	Desktop or wall-mount to be used in any environment.
36 Gbps non-blocking switching architecture	Get all the connectivity you need to your devices without congestion.
Energy Efficient Ethernet (IEEE 802.3az)	For maximum power savings and reduced energy costs.

Example Application

GS108X in a Business Environment



Why the NETGEAR GS108X Switch is ideal for small businesses

1. Remove any network bottleneck with the 10 Gigabit SFP+ uplink
2. Small and silent compact form factor for quiet operation - Adapts to your needs and configuration in any environment
3. Limited Lifetime* Warranty
4. Energy efficient switches that automatically adjust power consumption according to Energy-Efficient Ethernet standard

Technical Specifications

Technical Specifications	GS108X
Gigabit ports	8
SFP+ ports	1
Form Factor	Desktop/Wall-mount
Performance Specification	
Bandwidth	36 Gbps
Priority queues	8
Priority queuing	Weighted Round Robin (WRR)
MAC Address database size (48-bit MAC addresses)	16K
Multicast groups	N/A
Packet forwarding rate (64 byte packet size) (Mfps or Mpps)	41.664Mfps
Speed / Latency	100Mbps: <5μs 1Gbps: <2μs 10Gbps: <1μs
Jumbo frame support	Up to 9728 bytes
Acoustic noise level @ 25° C (dBA) (ANSI-S10.12)	0 dBA
Mean Time Between Failures (MTBF) @ 25° C	4,802,599 hrs (548.2 yrs)
Power/Energy Efficiency	
Energy-Efficient Ethernet	Yes
Max power (worst case, all ports used, line-rate traffic) (Watts)	5.7W
Quality of Service	
802.1p-based QoS/CoS Supported	Yes
Port-based rate limiting	N/A
Port-based QoS	N/A
IEEE 802.1p COS	Yes
IPv4 DSCP	Yes
Pre-Defined Rate Limiting Rates	N/A
Pre-Defined Port Priority Queues	8
Weighted Round Robin (WRR)	Yes
L2 Services - Availability	
Broadcast, multicast, unknown unicast storm control	N/A
Static Manual LAGs (Port Trunking)	N/A
LACP	N/A
IEEE 802.3x (full duplex and flow control)	Yes
LEDs	
Per port	Speed, Link, Activity
Per device	Power

Technical Specifications

Physical Specifications		GS108X
Dimensions (W x D x H)		235 x 100.8 x 27 mm (9.25 x 3.97 x 1.06 in)
Weight		0.575 kg (1.267 lbs)
Power Consumption		
Power Supply		External Power Adapter 12V 1.5A
Max power (worst case, all ports used, line-rate traffic) (Watts)		5.7W
Min power (link-down standby) (Watts)		2.3W
Heat Dissipation (max and min) (BTU/hr)		Max: 19.33 BTU/hr Min: 7.86 BTU/hr
Fan(s)		Fanless
Environmental Specifications		
Operating temperature		0° to 40°C (32° to 104°F)
Humidity (relative)		90% maximum relative humidity (RH), non-condensing
Altitude		10,000 ft (3,000 m) maximum
Electromagnetic Emissions and Immunity		
Certifications		RCM
		ICES-003
		FCC Part 15
		CE
		UKCA
		VCCI
		KC
	BSMI	
Electromagnetic Compliance (Class A or B)		Class B
Safety Certifications		
Certifications		RCM
		CE
		UKCA
		BSMI
Warranty and Support		
		Limited Lifetime* Warranty
		90-day 24x7 Online Technical Support
		Limited Lifetime Next Business Day Hardware Replacement (NBD)
		Category S2:
ProSUPPORT OnCall 24x7, Service Packs**		PMB0S12-10000S (1 yr) PMB0S32-10000S (3 yrs) PMB0S52-10000S (5 yrs)

Technical Specifications

Package Content			
All models		GS108X 8-Port Gigabit Ethernet Unmanaged Switch with 1 dedicated 10G SFP+ Port Power adapter (varies by region) Wall-mount kit Rubber feet Installation guide	
Optional Modules and Accessories			
1G Fiber SFP Transceiver	AGM731F	AGM731F	NETGEAR 1000BASE-SX SFP LC Transceiver (multimode, 1000m OM4, 550m OM3 50/125µm, 275m OM2/OM1 62.5/125µm)
1G Fiber SFP Transceiver	AGM732F	AGM732F	NETGEAR 1000BASE-LX SFP LC Transceiver (single mode, 10km 9/125µm)
1G Copper SFP Transceiver	AGM734	AGM734-10000S	NETGEAR 1000BASE-T SFP RJ45 Transceiver
10G SFP+ DAC	AXC761	AXC761-10000S	NETGEAR 10G Direct Attach SFP+ to SFP+ 1 Meter Passive DAC Cable
10G SFP+ DAC	AXC763	AXC763-10000S	NETGEAR 10G Direct Attach SFP+ to SFP+ 3 Meter Passive DAC Cable
10G Fiber SFP+ Transceiver	AXM761	AXM761-10000S	NETGEAR 10GBASE-SR SFP+ LC Transceiver (multimode, 550m OM4, 300m OM3 50/125µm, 33m OM2/OM1 62.5/125µm)
10G Fiber SFP+ Transceiver	AXM762	AXM762-10000S	NETGEAR 10GBASE-LR SFP+ LC Transceiver (single mode, 10km 9/125µm)
10G Fiber SFP+ Transceiver	AXM764	AXM764-10000S	NETGEAR 10GBASE-LR LITE SFP+ LC Transceiver (single mode, 2km 9/125µm)

Ordering Information

Ordering Information

GS108X-100NAS	North America
GS108X-100EUS	Europe
GS108X-100AUS	Australia and New Zealand
GS108X-100JPS	Japan
GS108X-100KOS	Korea
GS108X-100PES	Other APAC
GS108X-100UKS	Hong Kong
GS108X-100INS	India
GS108X-100PRS	China
GS108X-100TWS	Taiwan

* This product comes with a limited warranty that is valid only if purchased from a NETGEAR authorized reseller, and covers unmodified hardware, fans and internal power supplies - not software or external power supplies, and requires product registration at <https://www.netgear.com/business/registration> within 90 days of purchase; see <https://www.netgear.com/about/warranty> for details. Intended for indoor use only.

** The NETGEAR OnCall 24x7 contract provides unlimited phone and email technical support for your networking product. For products purchased prior to 06/2014, also includes next business-day hardware replacement.

NETGEAR and the NETGEAR Logo are trademarks of NETGEAR, Inc. in the United States and/or other countries. Other brand names mentioned herein are for identification purposes only and may be trademarks of their respective holder(s).

NETGEAR, Inc. 350 E. Plumeria Drive, San Jose, CA 95134-1911 USA, 1-888-NETGEAR(638-4327), E-mail: info@NETGEAR.com, www.NETGEAR.com