

Twoja Infrastruktura IT

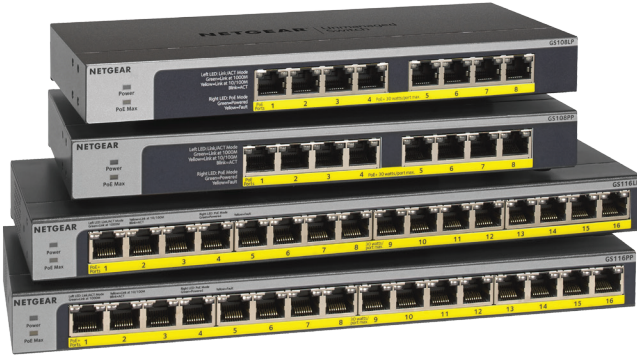
netf.pl

NETF, specjalizujemy się w sprzedaży zaawansowanej infrastruktury IT. Znajdą tu Państwo szeroki asortyment produktów od czołowych światowych producentów sprzętu i oprogramowania IT, w tym H3C, Huawei, Cisco, Juniper, Fortinet, a także Dell, IBM, CommVault i ESET. Dzięki współpracy z tymi renomowanymi partnerami, NETF zapewnia swoim klientom dostęp do najnowocześniejszych rozwiązań technologicznych.

**Bezpieczeństwo,
Efektywność,
Optymalizacja**



8-port and 16-port Gigabit Ethernet Unmanaged PoE/PoE+ Switches



Outstanding Power with Flexible Placement

The NETGEAR® Gigabit Unmanaged Switch series helps businesses cost-effectively increase power budget to expand their network.

Powered by the industry's first flexible PoE+ integrated technology, you can increase or decrease the PoE budget by simply buying a new power supply, effectively futureproofing small business networks and budgets.

All ports support PoE/PoE+ that makes them the perfect switches for deploying Wireless APs, Pan/Tilt/Zoom and fixed IP Cameras, VoIP Phones, access-limited security door locks or any other IoT PoE-powered devices.

The GS108LP, GS108PP, GS116LP and GS116PP Gigabit Ethernet switches come with 8 and 16 Gigabit copper ports in a desktop metal case.

The small form factor combined with the rack-mount and wall-mount accessories give you the flexibility to place these switches in small cabinets, in a 19" rack, on a wall or on your desk.

Highlights



All ports Support PoE+

All ports are able to provide up to 30W per port to any power-hungry device (PTZ cameras, PoE Lights, PD Switches, Access Points, more)



Flexible PoE Budget

NETGEAR's exclusive FlexPoE with interchangeable external power adapters allow you to increase (or decrease) your PoE budget as your needs change. GS108LP/GS108PP: 60W, 83W, 123W PoE Budget GS116LP/GS116PP: 76W, 115W, 183W PoE Budget



Flexible mounting options

Adapts to your needs and configuration in any environment. Desktop, wall-mount, or rack-mount with included mounting kits.



Compact, fanless, silent design

Small form-factor, fanless design for silent operation. Perfect for noise-sensitive environments.

Hardware at a Glance

Model Name	Form-Factor	10/100/1000 Base-T RJ45 ports	PoE/PoE+ 802.3af/ 802.3at Ports	PoE Budget/PSU	LEDs	PSU Supported/ PoE Budget	Fans
GS108LP	Desktop, wall & rack mount	8	8	PoE Budget: 60W PSU: 67.5W	Power, Port Link/Speed/Activity	PSU: 67.5W/90W/130W PoE: 60W/83W/123W	Fanless
GS108PP	Desktop, wall & rack mount	8	8	PoE Budget: 123W PSU: 130W	Power, Port Link/Speed/Activity	PSU: 67.5W/90W/130W PoE: 60W/83W/123W	Fanless
GS116LP	Desktop, wall & rack mount	16	16	PoE Budget: 76W PSU: 90W	Power, Port Link/Speed/Activity	PSU: 90W/130W/200W PoE: 76W/115W/183W	Fanless
GS116PP	Desktop, wall & rack mount	16	16	PoE Budget: 183W PSU: 200W	Power, Port Link/Speed/Activity	PSU: 90W/130W/200W PoE: 76W/115W/183W	Fanless



GS108LP/GS108PP

- 8 x Gig Copper Ports
- 8 x 802.3af/802.3at Ports
- Desktop, Wall-mount and 19-inch Rackmountable
- Small Form Factor



GS108LP/GS108PP rear

- Interchangeable External Power Supply



GS116LP/GS116PP

- 16 x Gig Copper Ports
- 16 x 802.3af/802.3at Ports
- Desktop, Wall-mount and 19-inch Rackmountable
- Small Form Factor

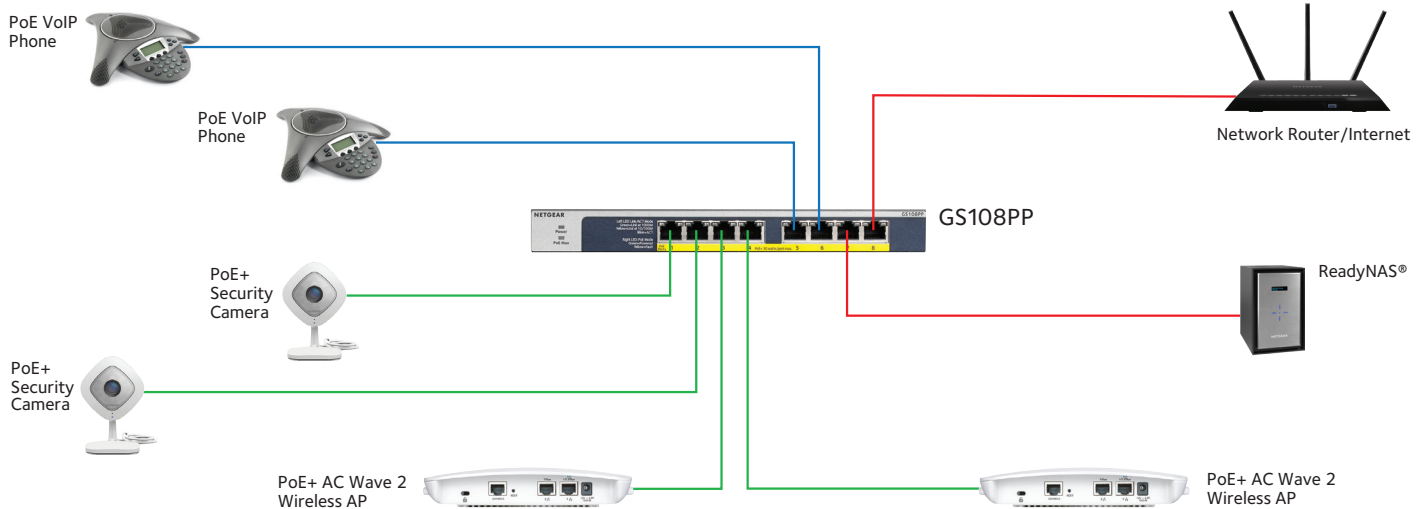


GS116LP/GS116PP rear

- Interchangeable External Power Supply

Example Application

GS108LP/GS108PP in a Business Environment



GS108LP/GS108PP in a Business Environment

The following table describes the PoE classes and switch allocations.

Device Class	Standard	Class Description	Minimum Power Allocated to the Powered Device	Range of Power Delivered to the Powered Device
0	PoE and PoE+	Default power (full)	0.44W	0.44W - 12.95W
1	PoE and PoE+	Very low power	4.0W	0.44W - 3.84W
2	PoE and PoE+	Low power	7.0W	3.84W - 6.49W
3	PoE and PoE+	Mid power	15.4W	6.49W - 12.95W
4	PoE+ only	High power	30.0W	12.95W - 25.5W

Why the NETGEAR PoE/PoE+ Switches are ideal for SMB

- Upgradable PoE budget with interchangeable power supplies
- Small form factor and silent for quiet operation
- Plug-and-play, automatic connectivity to your router or modem
- Prioritize voice and video traffic
- Lifetime Warranty* plus lifetime online support and lifetime Next Business Day (NBD) replacement

Accessory Power Adapters

Increase or decrease your PoE budget anytime by simply upgrading your switch Power Supply, without having to purchase a new switch. Future-proof your PoE budget with GS108LP or GS116LP. And if you have power-hungry devices and directly need a high power PoE switch, buy GS108PP or GS116PP. This unique combination from NETGEAR Business makes these switches the most adaptive in the market.

The following table describes the Accessory Power Adapters which are sold separately:

Switch Model	Power Adapter Model	Power Adapter Wattage	PoE+ Power Wattage
GS108LP (Comes w/ 67.5W PA)	EPS90W	90W	83W
	EPS130W	130W	123W
GS108PP (Comes w/ 130W PA)	EPS90W	90W	83W
	EPS130W	130W	123W
GS116LP (Comes w/ 90W PA)	EPS90W	90W	76W
	EPS130W	130W	115W
	EPS200W	200W	183W
GS116PP (Comes w/ 200W PA)	EPS90W	90W	76W
	EPS130W	130W	115W
	EPS200W	200W	183W

Technical Specifications for Accessory Power Adapters

Product	GS108LP	GS108PP	GS116LP	GS116PP
Power Adapter Warranty	2-years			
Technical Support	90 days of free technical support			
ProSUPPORT Contract Option	No			
Auto-applied contracts	No			

8-port and 16-port Gigabit Ethernet Unmanaged PoE/PoE+ Switches

Technical Specifications	GS108LP	GS108PP	GS116LP	GS116PP
				
Gigabit Ethernet RJ-45 Copper ports (10M/100M/1G) - 1000BASE-T	8		16	
PoE/PoE+ ports	8 PoE+ (60W PoE budget)	8 PoE+ (123W PoE budget)	16 PoE+ (76W PoE budget)	16 PoE+ (183W PoE budget)
Power Supply	External Input 54V 1.25A (67.5W)	External Input 54V 2.4A (130W)	External Input 54V 1.66A (90W)	External Input 54V 3.7A (200W)
Power Supply Supported	External Input 54V 2.4A (130W) Input 54V 1.66A (90W) Input 54V 1.25A (67.5W)		External Input 54V 3.7A (200W) Input 54V 2.4A (130W) Input 54V 1.66A (90W)	
Form Factor	Desktop/Rackmount/Wall-Mount			
Product Specifications				
Gigabit Ports	8		16	
Max MAC entries			4K	
Buffer Size	192KB		1MB	
Energy Efficient Ethernet (IEEE 802.3az compliant)			Yes	
PoE Support				
802.3af	Ports 1-8		Ports 1-16	
802.3at	Ports 1-8		Ports 1-16	
PoE Max Power Per Port	Up to 15.4w for 802.3af and 30W for 802.3at			
Total PoE Power Budget	60W	123W	76W	183W
Forwarding modes	Store-and-forward			
Bandwidth	16Gbps		32Gbps	
Jumbo frame support			Yes	
Acoustic noise (ANSI-S10.12)			0 (fanless)	
Mean Time Between Failures (MTBF)	2,752,476 hours		2,362,192 hours	
Quality of Service (QOS)				
DSCP			Yes	
IEEE 802.1p COS			Yes	
Queue WRR Ratio	1:3:5:7:8:10:12:15 Weighted Fair Queue (WFQ)			
LEDs				
Per port	Speed, Link, Activity, PoE			
Per device	Power Status, PoE Max			

8-port and 16-port Gigabit Ethernet Unmanaged PoE/PoE+ Switches

IEEE Network Protocols	GS108LP	GS108PP	GS116LP	GS116PP
<ul style="list-style-type: none"> IEEE 802.3 Ethernet IEEE 802.3u 100BASE-TX IEEE 802.3ab 1000BASE-T IEEE 802.1p Class of Service 	<ul style="list-style-type: none"> IEEE 802.3az Energy Efficient Ethernet (EEE) IEEE 802.3i 10BASE-T Ethernet IEEE 802.3x Flow Control 			
Physical Specifications				
Dimensions (W x D x H)	236 x 102 x 27 mm 9.29 x 4.02 x 1.06 in		286 x 102 x 27 mm 11.26 x 4.02 x 1.06 in	
Weight	0.6 kg (1.32 lb)		0.88 kg (1.94 lb)	
Power Consumption				
Power Supply	External Input 54V 1.25A (67.5W)	External Input 54V 2.4A (130W)	External Input 54V 1.66A (90W)	External Input 54V 3.7A (200W)
Power Supply Supported	External Input 54V 2.4A (130W) Input 54V 1.66A (90W) Input 54V 1.25A (67.5W)		External Input 54V 3.7A (200W) Input 54V 2.4A (130W) Input 54V 1.66A (90W)	
Max power (worst case, all ports used, line-rate traffic) (Watts)	67.5W	130W	90W	200W
Min power (link-down standby) (Watts)	1.23W		2.68W	
Heat Dissipation (max and min) (BTU/hr)	230.85 BTU/ 3.69 BTU	444.6 BTU/ 3.69 BTU	270.18 BTU/ 9.18 BTU	680.58 BTU/ 9.14 BTU
Energy Efficient Ethernet (EEE) IEEE 802.3az			Yes	
Short cable power reduction			Yes	
Auto power-down			Yes	
Fan(s)			0 (fanless)	
Environmental Specifications				
Operating				
Operating Temperature	0° to 40°C (32° to 104°F)			
Humidity	90% maximum relative humidity (RH), non-condensing			
Altitude	10,000 ft (3,000 m) maximum			
Storage				
Storage Temperature	-20° to 70°C (-4° to 158°F)			
Humidity (relative)	95% maximum relative humidity (RH), non-condensing			
Altitude	10,000 ft (3,000 m) maximum			

Electromagnetic Emissions and Immunity Certifications	GS108LP	GS108PP	GS116LP	GS116PP
Certifications		47 CFR FCC Part 15, SubpartB, Class A ICES-003:2016 Issue 6, Class A ANSI C63.4:2014 55032:2012+AC:2013, Class A EN 55024:2010 EN 61000-3-2:2014, Class A EN 61000-3-3:2013 AS/NZS CISPR 32:2015, Class A VCCI-CISPR 32:2016, Class A KN 35 CNS 13438 Electromagnetic Compliance Class A		
Safety Certifications				
Certifications		CB. IEC 60950-1:2005(ed.2) + A1:2009 + A2:2013 UL/cUL Listed; UL60950-1, 2nd Ed. 2014; CAN/CSA C22.2 No. 60950-1-07, 2nd Ed. 2014 EN 60950-1: 2006 + A11:2009 + A1:2010 + A12:2011 + A2:2013 AS/NZS 60950.1:2015 KN 32 CNS 14336-1		
Warranty and Support				
		ProSAFE Lifetime Warranty		
		Lifetime Online Technical Support*		
		Lifetime Next-Business-Day (NBD) Replacement		
ProSUPPORT OnCall 24x7 Service Packs**		Category S2 PMB0S12 (1 yr) PMB0S32 (3 yrs) PMB0S52 (5 yrs)		
Package Contents				
All models		NETGEAR Gigabit Ethernet PoE+ Unmanaged Switch Power adapter (localized to the country of sale) Wall installation kit & Rack-mount kit Quick install guide		

Ordering Information

GS108LP-100NAS	North America and Latin America
GS108LP-100EUS	Europe and United Kingdom
GS108LP-100AJS	Asia Pacific and Australia
GS108PP-100NAS	North America and Latin America
GS108PP-100EUS	Europe and United Kingdom
GS108PP-100AJS	Asia Pacific and Australia
GS116LP-100NAS	North America and Latin America
GS116LP-100EUS	Europe and United Kingdom
GS116LP-100AJS	Asia Pacific and Australia
GS116PP-100NAS	North America and Latin America
GS116PP-100EUS	Europe and United Kingdom
GS116PP-100AJS	Asia Pacific and Australia

Optional Modules and Accessories

EPS90W	90W External Power Adapter
EPS130W	130W External Power Adapter
EPS200W	200W External Power Adapter

*This product comes with a limited warranty that is valid only if purchased from a NETGEAR authorized reseller, and covers unmodified hardware, fans and internal power supplies – not software or external power supplies, and requires product registration at <https://www.netgear.com/business/registration> within 90 days of purchase; see <https://www.netgear.com/about/warranty> for details. Intended for indoor use only.

** The NETGEAR OnCall 24x7 contract provides unlimited phone and email technical support for your networking product. For products purchased prior to 06/2014, also includes next business-day hardware replacement.

NETGEAR, the NETGEAR Logo and ProSAFE are trademarks of NETGEAR, Inc. in the United States and/or other countries. Other brand names mentioned herein are for identification purposes only and may be trademarks of their respective holder(s).

NETGEAR, Inc. 350 E. Plumeria Drive, San Jose, CA 95134-1911 USA, 1-888-NETGEAR (638-4327), E-mail: info@NETGEAR.com, www.NETGEAR.com

D-GS108LP/GS108PP/GS116LP/GS116PP-16Jul19