

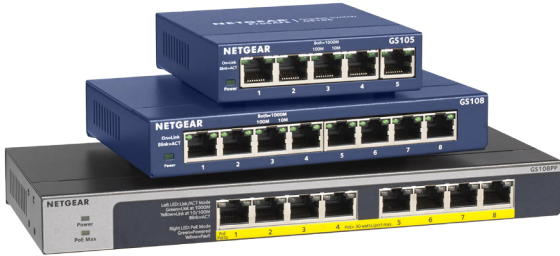
Twoja Infrastruktura IT

netf.pl

NETF, specjalizujemy się w sprzedaży zaawansowanej infrastruktury IT. Znajdą tu Państwo szeroki asortyment produktów od czołowych światowych producentów sprzętu i oprogramowania IT, w tym H3C, Huawei, Cisco, Juniper, Fortinet, a także Dell, IBM, CommVault i ESET. Dzięki współpracy z tymi renomowanymi partnerami, NETF zapewnia swoim klientom dostęp do najnowocześniejszych rozwiązań technologicznych.

**Bezpieczeństwo,
Efektywność,
Optymalizacja**





GS105/GS108/GS108PP

Instant Connectivity with Reliable Performance

The NETGEAR® Gigabit Unmanaged Switch series helps businesses cost-effectively expand their network to Gigabit speeds and higher port counts. The GS105, GS108, and GS108PP Gigabit Ethernet switches come with 5 and 8 Gigabit copper ports in a desktop metal case and are wall-mountable. These switches are energy efficient, built to last, and rigorously tested to provide the reliability businesses need. 802.1p traffic prioritization and jumbo frame support allow for seamless integration with more sophisticated networks.

Highlights

Plug and Play

- The standards-based Gigabit switches sense and adjust for network speed and cabling type automatically. Easily integrate into your existing Ethernet network - no matter if it is running at 10/100Mbps or Gigabit speed
- Simple set up with no software or configuration needed
- Front panel LEDs keep you informed of power status, link speed and link activities

Traffic Prioritization

- Prioritize mission-critical applications such as voice and video Support IEEE 802.1 p and DSCP-based QoS for delivering data based on priority and type

High Quality and Reliable Performance

- Superior network performance at non-blocking rate delivers true Gigabit speed with no compromise
- Durable metal case and long product life (shown by MTBF numbers)

Energy Efficient

- GS105, GS108, and GS108PP support the latest Energy Efficient Ethernet (IEEE 802.3az) standard, which reduces energy consumption when there is light traffic on an active port or when there is no link or no activity detected. It can further save energy when a short cable (<100m) is used. Energy savings lead directly to cost savings in operation.

PoE/PoE+ Support

- The GS108PP is a PoE/PoE+ switch that supports PoE 802.3af and PoE+ 802.3at on all 8 ports. The total max PoE budget for GS108PP is 123W.

Lifetime Warranty*

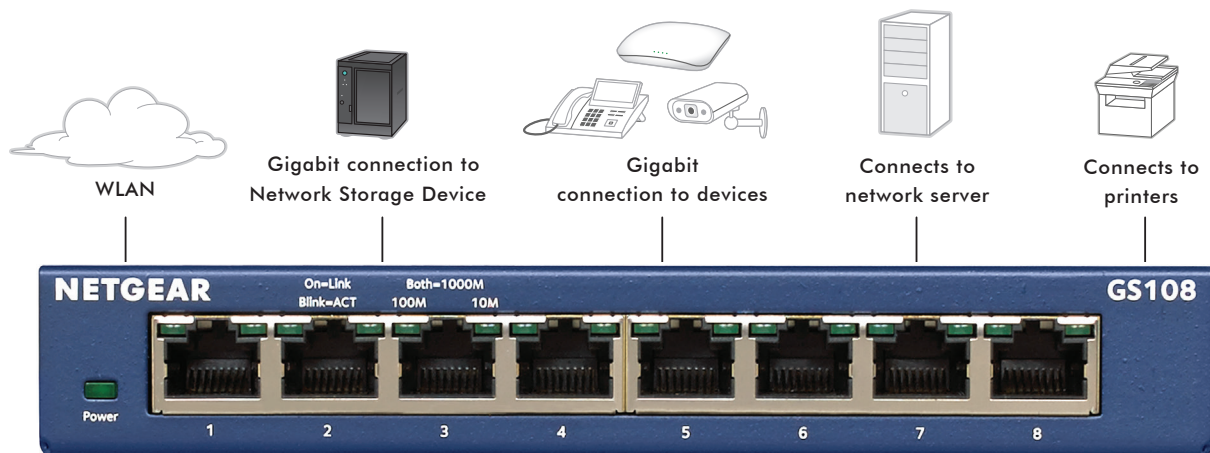
- Industry's leading lifetime warranty, not only on hardware but also includes lifetime online support as well as next-business day (NBD) replacement support, providing customers peace-of-mind using NETGEAR switches in their network.



Hardware at a Glance

Model name	Form-Factor	FRONT		REAR	
		10/100/1000 Base-T RJ45 ports	PoE 802.3af	Power Supply	PoE budget
GS105	Desktop, wall mount	5	N/A	External Power Adapter, 12V/0.5A	N/A
GS108	Desktop, wall mount	8	N/A	External Power Adapter, 12V/0.5A	N/A
GS108PP	Desktop, wall & rack mount	8	Supports PoE 802.3af and PoE+ 802.3at	External Power Adapter, 54V/2.4A	123W

SOHO Network Application



Why the NETGEAR Gigabit Ethernet Switch is ideal for SOHO Networks

- Superior Performance
- High Quality and Reliability
- Prioritize voice and video traffic
- Lifetime Warranty* plus lifetime online support and lifetime Next Business Day (NBD) replacement

Technical Specifications

Product	GS105v5	GS108v4	GS108PP
PRODUCT SPECIFICATIONS			
Gigabit ports	5	8	8
Max MAC entries	2K	4K	4K
Buffer size	128KB	192KB	192KB
Energy Efficient Ethernet (IEEE 802.3az complaint)	Yes		
POE SUPPORT			
802.3af PoE Ports	N/A	N/A	Ports 1-8
802.3at PoE Ports	N/A	N/A	Ports 1-8
PoE Max Power Per Port	N/A	N/A	Up to 15.4w for 802.3af and 30W for 802.3at
Total PoE Power Budget	N/A	N/A	123W
PERFORMANCE SPECIFICATION			
Forwarding modes	Store-and-forward		
Bandwidth	10 Gbps	16 Gbps	16 Gbps
Jumbo frame support	Up to 9K packet size		
Acoustic noise (ANSI-S10.12)	0	0	0
Mean Time Between Failures (MTBF)	3,197,945	9,727,733	2,752,476
QUALITY OF SERVICE (QOS)			
DSCP	Yes		
IEEE 802.1p COS	Yes		
Queue WRR Ratio	1:2:4:8	1:2:4:8	1:3:5:7:8:10:12:15 Weighted Fair Queue (WFQ)
IEEE NETWORK PROTOCOLS			
IEEE 802.3 Ethernet	IEEE 802.1p Class of Service		
IEEE 802.3ab 1000BASE-T	IEEE 802.3x full-duplex flow control		
MISCELLANEOUS FEATURES			
IEEE 802.3AZ (Energy Efficient Ethernet)	Yes		
LEDs			
Per port	Speed, Link, Activity	Speed, Link, Activity	Speed, Link, Activity, PoE
Per device	Power Status	Power Status	Power Status, PoE Max
PHYSICAL SPECIFICATIONS			
Dimensions	94 x 100 x 27 mm (3.7 x 3.9 x 1.1 in)	158 x 102 x 27 mm (6.2 x 4.0 x 1.1 in)	236x 102x x27mm (9.29x 4.02x 1.06 in)
Weight	0.26 kg (0.57 lb)	0.47 kg (1.04 lb)	0.59 kg (1.30 lb)

Product	GS105v5	GS108v4	GS108PP
Power Consumption (when all ports used, line-rate traffic and max PoE)			
Worst case, all ports used, line-rate traffic, max PoE	2.7w	4.92w	128.6 W
ENVIRONMENTAL SPECIFICATIONS			
Operating			
Operating Temperature	32° to 122°F (0° to 50°C)	32° to 104°F (0° to 40°C)	32° to 104°F (0° to 40°C)
Humidity	90% maximum relative humidity, non-condensing		
Altitude	10,000 ft (3,000 m) maximum		
Storage			
Storage Temperature	- 4° to 158°F (-20° to 70°C)		
Humidity	95% maximum relative humidity, non-condensing		
Altitude	10,000 ft (3,000 m) maximum		
Electromagnetic Emissions and Immunity			
Certifications Class	B (CE mark, FCC Part 15, ICES-003, VCCI, RCM)	B (CE mark, FCC Part 15, ICES-003, VCCI, RCM)	A (CE mark, FCC Part 15, ICES-003, VCCI, RCM, BSMI, KC)
Safety			
Certifications	CB	CE LVD	CB, CE LVD, BSMI, EAC, RCM and KC
	EN 60950-1		
WARRANTY AND SUPPORT*			
Hardware Warranty	Lifetime on switch and 2-year on power adapter		
Live Chat Support	Lifetime		
Next Business Day Replacement	Lifetime		

Ordering Information

PACKAGE CONTENT	
All models	Gigabit Ethernet Switch
	Power adapter
	Wall-mount kit and rubber feet Rack-mount kit (GS108PP only)
	Quick Install Guide
ORDERING INFORMATION	
GS105NA	North America and Latin America
GS105GE	Europe
GS105AU	Australia
GS105UK	United Kingdom
GS105-500JPS	Japan
GS108-400NAS	North America and Latin America
GS108GE	Europe
GS108AU	Australia
GS108UK	United Kingdom
GS108-400JPS	Japan
GS108PP-100NA	North America and Latin America
GS108PP-100EU	Europe
GS108PP-100AJS	Australia and Japan

* This product comes with a limited warranty that is valid only if purchased from a NETGEAR authorized reseller, and modifications to product may void the warranty; covers hardware, fans, and internal power supplies—not software or external power supplies; see <http://www.netgear.com/about/warranty/> for details. Lifetime technical support includes basic phone support for 90 days from purchase date and lifetime online chat support when purchased from a NETGEAR authorized reseller.

† NETGEAR #1 in US Market Share according to NPD data for Unmanaged and Web/Smart Switches, July 2017.

NETGEAR and the NETGEAR logo are trademarks of NETGEAR, Inc. in the United States and/or other countries. Other brand names mentioned herein are for identification purposes only and may be trademarks of their respective holder(s). Information is subject to change without notice. © 2017 NETGEAR, Inc. All rights reserved.