

# Twoja Infrastruktura IT

## netf.pl

NETF, specjalizujemy się w sprzedaży zaawansowanej infrastruktury IT. Znajdą tu Państwo szeroki asortyment produktów od czołowych światowych producentów sprzętu i oprogramowania IT, w tym H3C, Huawei, Cisco, Juniper, Fortinet, a także Dell, IBM, CommVault i ESET. Dzięki współpracy z tymi renomowanymi partnerami, NETF zapewnia swoim klientom dostęp do najnowocześniejszych rozwiązań technologicznych.

---

**Bezpieczeństwo,  
Efektywność,  
Optymalizacja**





EdgeRouter Lite  
3-Port Router

Model: ERLite-3

Sophisticated Routing Features

Advanced Security, Monitoring, and Management

High-Performance Gigabit Ports





## Advanced 3-Port Router

Introducing the EdgeRouter™ Lite from Ubiquiti Networks, part of the EdgeMAX™ series. Housed in a compact, fanless form factor, the EdgeRouter Lite operates quietly as it delivers the powerful routing, security, and management features you require to efficiently run your network.

### Direct Traffic Flow

**Interfaces** Each Gigabit port functions as an independent interface. You can also configure Virtual Local Area Network (VLAN) interfaces to meet your network segmentation requirements.

**Routing** Configure static routes and dynamic routing protocols to effectively manage the routes used by the EdgeRouter.

### Secure Your Network

**Firewall Policies** Organize the rules you apply in the order you specify.

**Firewall Groups** Apply the policies to groups filtered by IP address, network address, or port number.

**NAT Rules** The EdgeRouter Lite changes packet addressing based on your customized source and destination NAT rules.

### Manage Your Network

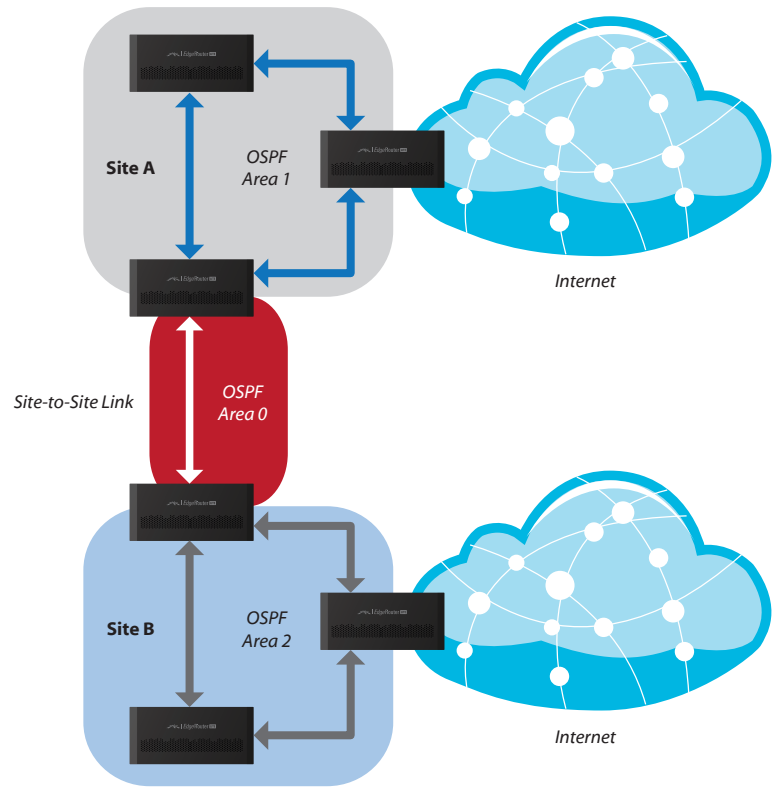
**DHCP Server** Set up multiple DHCP servers to assign IP ranges in different subnets on the different interfaces. Easily control dynamic and static IP addressing for your network devices.

**Monitoring Tools** Conveniently track network activity and devices from tools such as *Ping*, *Trace*, *Discover*, *Packet Capture*, and *Log Monitor*.

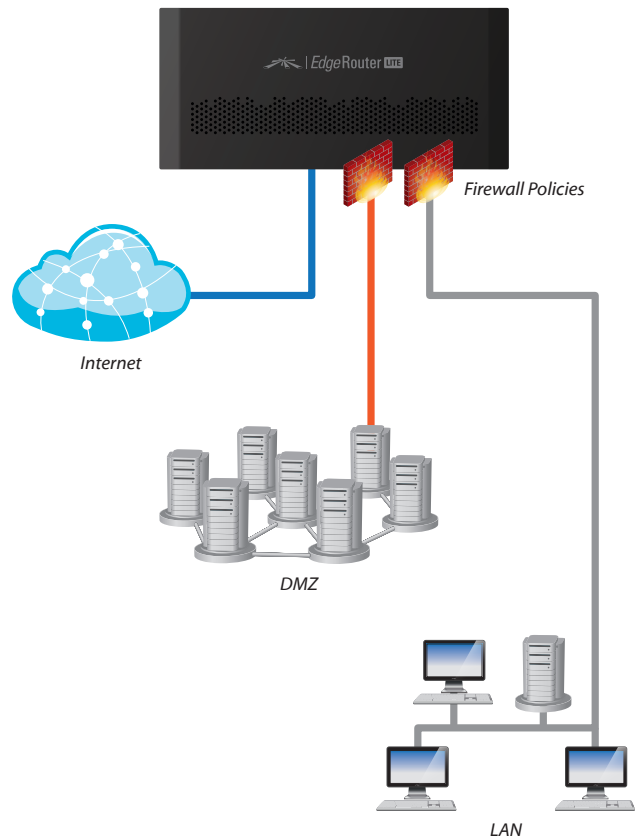
**User Accounts** Manage access to the EdgeRouter Lite using unique administrator and operator accounts.

With these capabilities and more, the EdgeRouter Lite provides the centralized control you want to optimize the performance and reliability of your network.

### Typical Service Provider Deployment

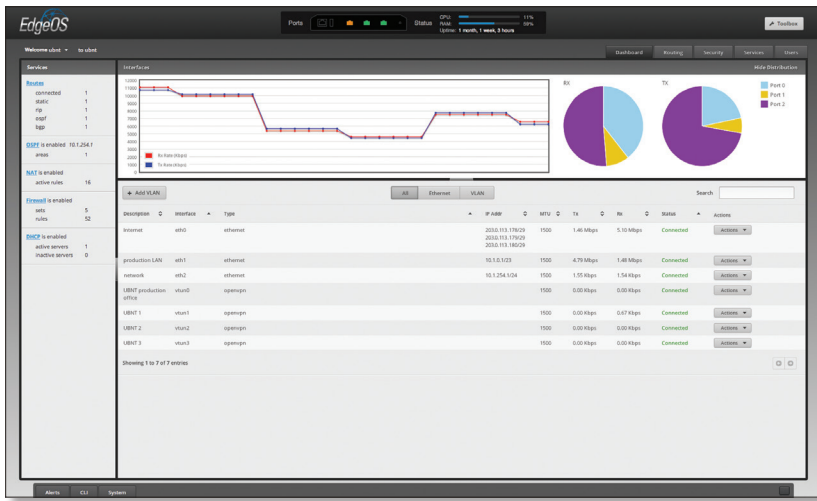


### Typical Corporate Deployment



## Intuitive User Interface

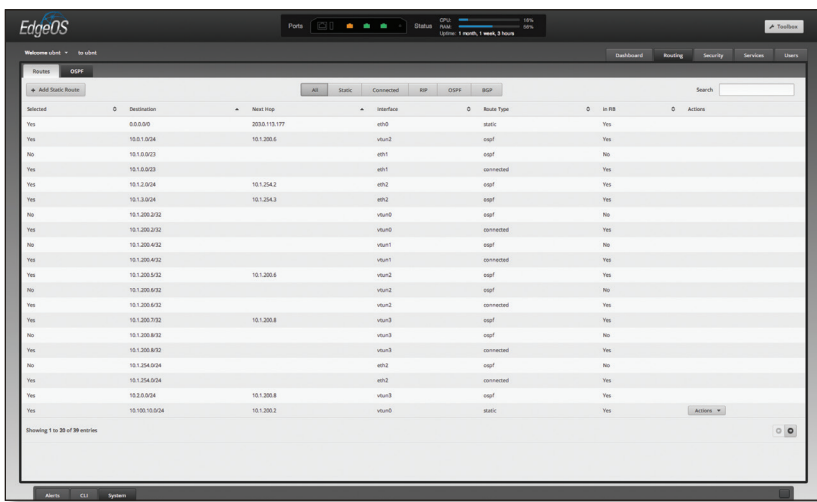
The EdgeRouter Lite provides a graphical user interface designed for convenient setup and control. Accessed via a network port and web browser, the user-friendly interface provides intuitive management with a virtual view of the ports, displaying physical connectivity, speed, and status. The Dashboard displays detailed statistics: IP information, MTU, transmit and receive speeds, and status for each physical and virtual interface.



## Powerful Features

EdgeOS™ is a sophisticated operating system loaded with robust features, including:

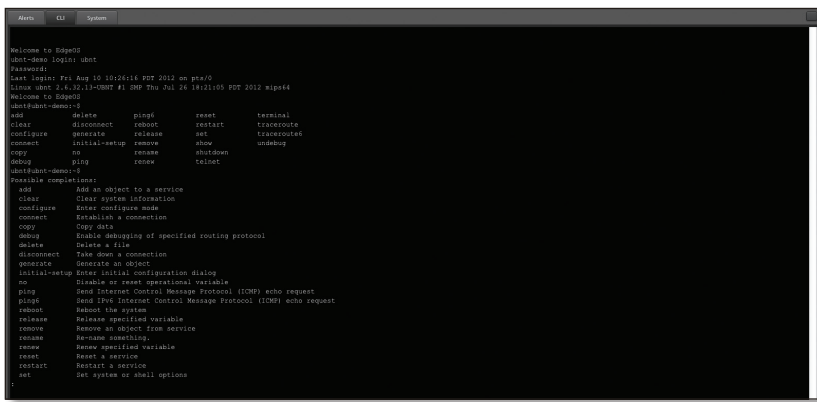
- Static routes and support of routing protocols: OSPF, RIP, and BGP
- Firewall policies and NAT rules
- DHCP services
- Quality of Service (QoS)
- Network administration and monitoring tools
- Comprehensive IPv6 support
- Choice of configuration methods: the graphical user interface to visualize the workings of your network or the Command Line Interface (CLI) to use advanced, command-driven configuration



## Configuration by CLI

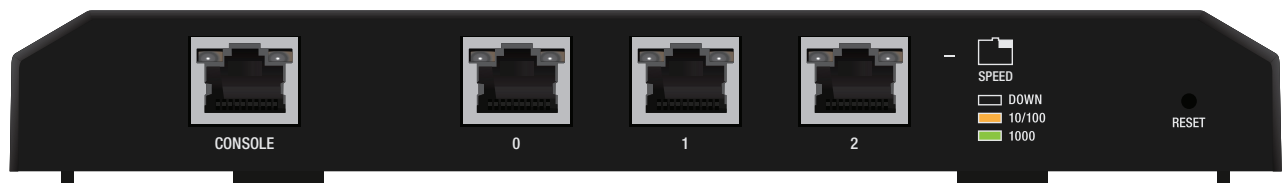
The CLI provides quick and flexible configuration by command line and features the following:

- For power users, configuration and monitoring of all advanced features
- Direct access to standard Linux tools and shell commands
- CLI access through the serial console port, SSH, Telnet, and the graphical user interface



# Hardware Specifications

EdgeRouter Lite	
Dimensions	197.52 x 91 x 28 mm
Weight	289.2 g
Power Input	12VDC, 1A Power Adapter (Included) 9 to 24V (Supported Voltage Range)
Button	Reset
Processor	Dual-Core 500 MHz, MIPS64 with Hardware Acceleration for Packet Processing
System Memory	512 MB DDR2 RAM
Onboard Flash Storage	2 GB
Certifications	CE, FCC, IC
Wall-Mount	Yes
Operating Temperature	-10 to 45°C (14 to 113°F)
Operating Humidity	90% Non-Condensing
Layer 3 Forwarding Performance	
Packet Size: 64 Bytes	1,000,000 pps
Packet Size: 512 Bytes or Larger	3 Gbps (Line Rate)
LEDs Per Port	
Serial Console Port	Power
Data Ports	Speed/Link/Activity
Networking Interfaces	
Serial Console Port	(1) RJ45 Serial Port
Data Ports	(3) 10/100/1000 Ethernet Ports



Front Panel



Back Panel

# Software Specifications

EdgeOS	
Interface/Encapsulation	Ethernet 802.1q VLAN PPPoE GRE IP in IP Bridging Bonding (802.3ad)
Addressing	Static IPv4/IPv6 Addressing DHCP/DHCPv6
Routing	Static Routes OSPF/OSPFv3 RIP/RIPng BGP (with IPv6 Support) IGMP Proxy
Security	ACL-Based Firewall Zone-Based Firewall NAT
VPN	IPSec Site-to-Site and Remote Access OpenVPN Site-to-Site and Remote Access PPTP Remote Access L2TP Remote Access PPTP Client
Services	DHCP/DHCPv6 Server DHCP/DHCPv6 Relay Dynamic DNS DNS Forwarding VRRP RADIUS Client Web Caching
QoS	FIFO Stochastic Fairness Queueing Random Early Detection Token Bucket Filter Deficit Round Robin Hierarchical Token Bucket Ingress Policing
Management	Web UI CLI (Console, SSH, Telnet) SNMP NetFlow LLDP NTP UBNT Discovery Protocol Logging

TERMS OF USE: Ubiquiti devices must be professionally installed. For outdoor applications, shielded Category 5 (or above) cable and earth grounding must be used as conditions of product warranty. For indoor applications, Category 5 (or above) cabling must be used as a condition of product warranty.

For further information, please visit [www.ubnt.com](http://www.ubnt.com).

All specifications in this document are subject to change without notice.

© 2012 Ubiquiti Networks, Inc. All rights reserved.



[www.ubnt.com](http://www.ubnt.com)

JL091112