

Twoja Infrastruktura IT netf.pl

NETF, specjalizujemy się w sprzedaży zaawansowanej infrastruktury IT. Znajdą tu Państwo szeroki asortyment produktów od czołowych światowych producentów sprzętu i oprogramowania IT, w tym H3C, Huawei, Cisco, Juniper, Fortinet, a także Dell, IBM, CommVault i ESET. Dzięki współpracy z tymi renomowanymi partnerami, NETF zapewnia swoim klientom dostęp do najnowocześniejszych rozwiązań technologicznych.

**Bezpieczeństwo,
Efektywność,
Optymalizacja**



ePMP™ 6 GHz 2x2 25 dBi Dish Antenna

QUICK LOOK:

These antennas are engineered specifically for the 6 GHz band. Aside from frequency coverage, the key advantage is focusing higher gain in the main bore sight while minimizing side lobes in the propagation pattern.

- **25 dBi gain**
- **5.150 to 7.125 GHz spectrum**
- **28 dBi gain with range extender**
- **Compatible with Force 4600C**

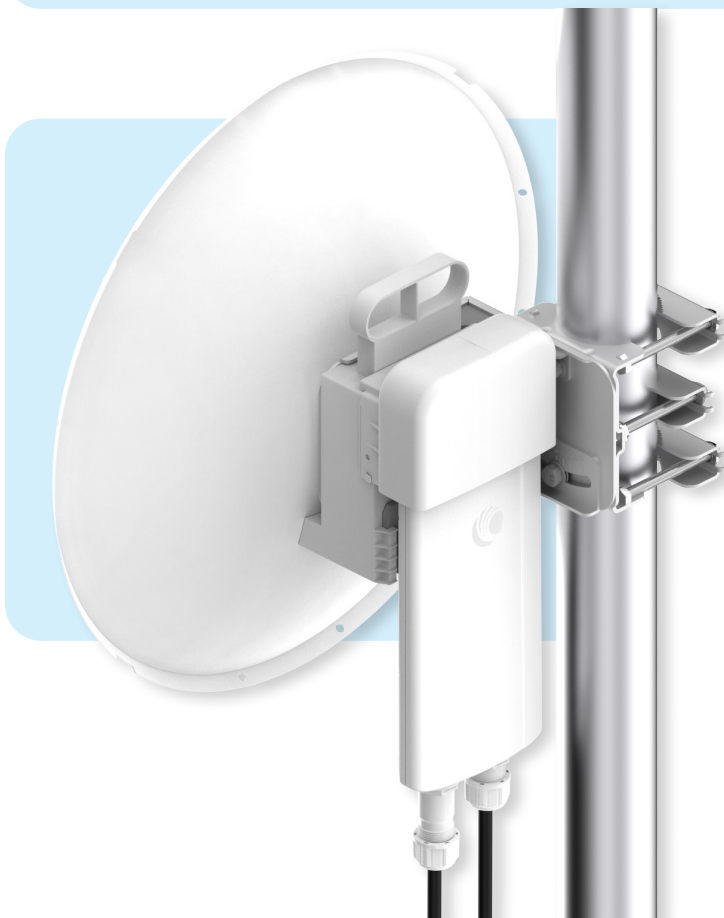


Cambium Networks has deployed more than thirteen million radios around the world achieving unparalleled degrees of scalability. Continuing the tradition of designing and manufacturing industry leading antenna solutions, Cambium Networks introduces the ePMP 6 GHz Dish antenna.

The antenna works across the 6 GHz spectrum and provides 7° beamwidth coverage. To simplify installation, the antenna is shipped with the mounting bracket needed to mount on a pole and the cables needed to directly connect the dish to a Force 4600C Subscriber Module.

Key Deployment Advantages

- **Durable:** Steel Construction with powder coated finish for long-term use
- **Easy Installation and Deployment:** consistent gain from 5.150 to 7.125 GHz allows the operator to select a channel anywhere in band to achieve the expected performance
- **Predictable Performance:** increased gain greatly improves link quality and link stability at greater distances.
- **Designed for the Installer:** Convenient mounting for ease of deployment in tower as well as small-cell applications



ePMP™ 6 GHz 2x2 25 dBi Dish Antenna

Antenna Specifications

Frequency Range	5.150 to 7.125 GHz
Gain	25 dBi
Gain with range extender	28 dBi
3 dB Beamwidth Azimuth	7°
Wind Survival	200 km/h 180 km/h with extender
Port-to-Port Isolation	> 35 dB
Front-to-Back Ratio	> 35 dB
Maximum Input Power	5W
Input Impedance	50 ohms

Antenna Specifications

Mounting Connectors	2 x RP SMA
Mounting Hardware	Included for mounting to mast diameters 1.25" to 3.0" (30-75 mm) Hardware included to connect Force 4600C to back of antenna body
Dimensions H x W x D	590 x 525 x 280 mm (23.2 x 20.7 x 11 in)
Weight	5.5 kg (12.1 lbs) With Force 4600C: 7.3 Kg (16.1 lbs)
Environmental	IP67

Ordering Information

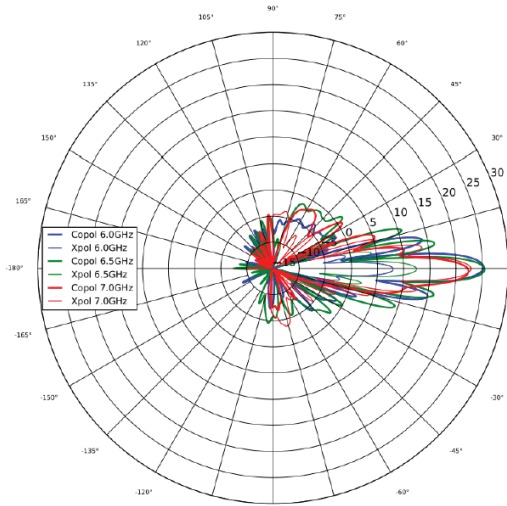
C060900D021A	ePMP 6 GHz 2x2 Dish Antenna
---------------------	-----------------------------



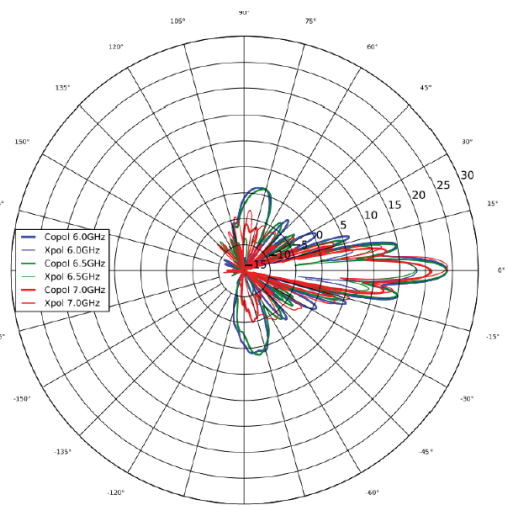
ePMP™ 6 GHz 2x2 25 dBi Dish Antenna

6 GHz Dish Antenna Patterns

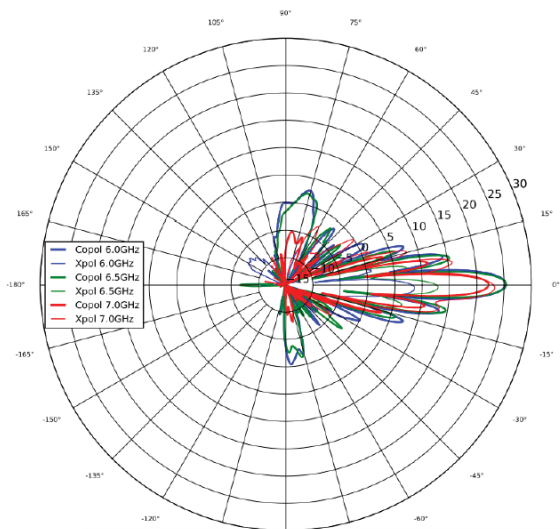
Azimuth, Horizontal



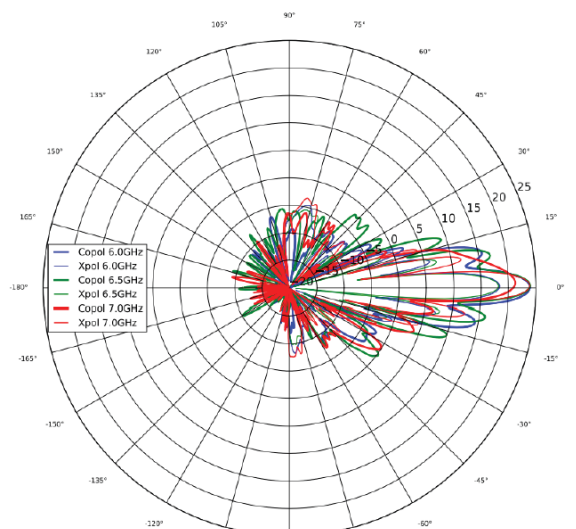
Azimuth, Vertical



Elevation, Horizontal



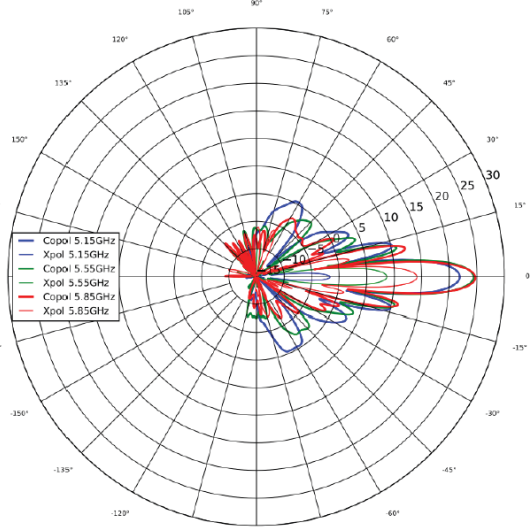
Elevation, Vertical



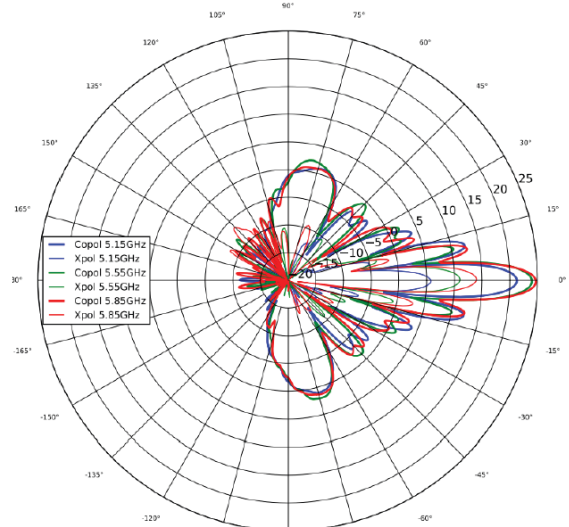
ePMP™ 6 GHz 2x2 25 dBi Dish Antenna

5 GHz Dish Antenna Patterns

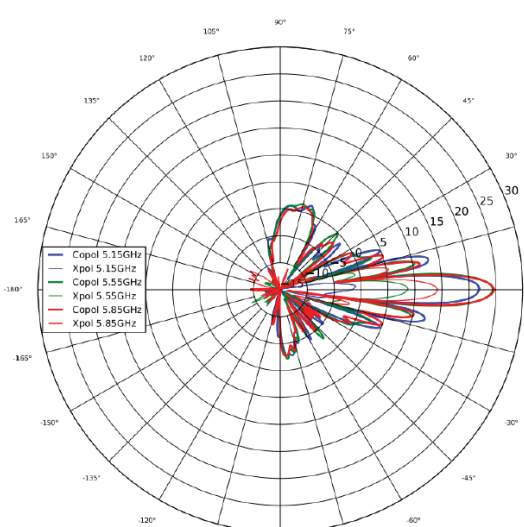
Azimuth, Horizontal



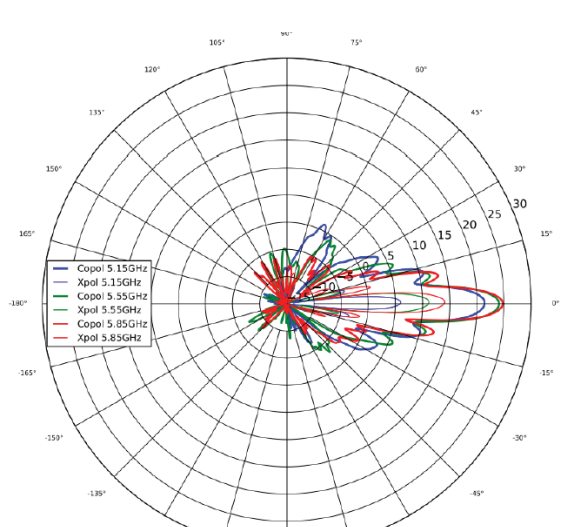
Azimuth, Vertical



Elevation, Horizontal



Elevation, Vertical



About Cambium Networks

Cambium Networks empowers millions of people with wireless connectivity worldwide. Its wireless portfolio is used by commercial and government network operators as well as broadband service providers to connect people, places and things. With a single network architecture spanning fixed wireless and Wi-Fi, Cambium Networks enables operators to achieve maximum performance with minimal spectrum. End-to-end cloud management transforms networks into dynamic environments that evolve to meet changing needs with minimal physical human intervention. Cambium Networks empowers a growing ecosystem of partners who design and deliver gigabit wireless solutions that just work.